

WOTLAND STATION  
EASTERN

---

---

TRANSIT BOOK

365

---

---

KEUFFEL & ESSER CO.  
DRAWING MATERIALS  
AND  
SURVEYING INSTRUMENTS.  
NEW YORK.  
CHICAGO. SAN FRANCISCO. ST. LOUIS.

TABLES FOR EXCAVATIONS AND EMBANKMENTS.

DISTANCES FROM CENTER OF ROADWAY FOR CROSS SECTIONING.

ROADWAY 18 FEET WIDE. SEE SLOPES 1 TO 1.

FOR SINGLE TRACK EXCAVATIONS.

PLEASE RETURN TO  
GAUGA COUNTY ENGINEER

COURT HOUSE

CHARDON, O.  
PHONE 250-X

	0	.1	.2	.3	.4	.5	.6	.7	.8	.9	
0	9.0	9.1	9.2	9.3	9.4	9.5	9.6	9.7	9.8	9.9	0
1	10.0	10.1	10.2	10.3	10.4	10.5	10.6	10.7	10.8	10.9	1
2	11.0	11.1	11.2	11.3	11.4	11.5	11.6	11.7	11.8	11.9	2
3	12.0	12.1	12.2	12.3	12.4	12.5	12.6	12.7	12.8	12.9	3
4	13.0	13.1	13.2	13.3	13.4	13.5	13.6	13.7	13.8	13.9	4
5	14.0	14.1	14.2	14.3	14.4	14.5	14.6	14.7	14.8	14.9	5
6	15.0	15.1	15.2	15.3	15.4	15.5	15.6	15.7	15.8	15.9	6
7	16.0	16.1	16.2	16.3	16.4	16.5	16.6	16.7	16.8	16.9	7
8	17.0	17.1	17.2	17.3	17.4	17.5	17.6	17.7	17.8	17.9	8
9	18.0	18.1	18.2	18.3	18.4	18.5	18.6	18.7	18.8	18.9	9
10	19.0	19.1	19.2	19.3	19.4	19.5	19.6	19.7	19.8	19.9	10
11	20.0	20.1	20.2	20.3	20.4	20.5	20.6	20.7	20.8	20.9	11
12	21.0	21.1	21.2	21.3	21.4	21.5	21.6	21.7	21.8	21.9	12
13	22.0	22.1	22.2	22.3	22.4	22.5	22.6	22.7	22.8	22.9	13
14	23.0	23.1	23.2	23.3	23.4	23.5	23.6	23.7	23.8	23.9	14
15	24.0	24.1	24.2	24.3	24.4	24.5	24.6	24.7	24.8	24.9	15
16	25.0	25.1	25.2	25.3	25.4	25.5	25.6	25.7	25.8	25.9	16
17	26.0	26.1	26.2	26.3	26.4	26.5	26.6	26.7	26.8	26.9	17
18	27.0	27.1	27.2	27.3	27.4	27.5	27.6	27.7	27.8	27.9	18
19	28.0	28.1	28.2	28.3	28.4	28.5	28.6	28.7	28.8	28.9	19
20	29.0	29.1	29.2	29.3	29.4	29.5	29.6	29.7	29.8	29.9	20
21	30.0	30.1	30.2	30.3	30.4	30.5	30.6	30.7	30.8	30.9	21
22	31.0	31.1	31.2	31.3	31.4	31.5	31.6	31.7	31.8	31.9	22
23	32.0	32.1	32.2	32.3	32.4	32.5	32.6	32.7	32.8	32.9	23
24	33.0	33.1	33.2	33.3	33.4	33.5	33.6	33.7	33.8	33.9	24
25	34.0	34.1	34.2	34.3	34.4	34.5	34.6	34.7	34.8	34.9	25
26	35.0	35.1	35.2	35.3	35.4	35.5	35.6	35.7	35.8	35.9	26
27	36.0	36.1	36.2	36.3	36.4	36.5	36.6	36.7	36.8	36.9	27
28	37.0	37.1	37.2	37.3	37.4	37.5	37.6	37.7	37.8	37.9	28
29	38.0	38.1	38.2	38.3	38.4	38.5	38.6	38.7	38.8	38.9	29
30	39.0	39.1	39.2	39.3	39.4	39.5	39.6	39.7	39.8	39.9	30
31	40.0	40.1	40.2	40.3	40.4	40.5	40.6	40.7	40.8	40.9	31
32	41.0	41.1	41.2	41.3	41.4	41.5	41.6	41.7	41.8	41.9	32
33	42.0	42.1	42.2	42.3	42.4	42.5	42.6	42.7	42.8	42.9	33
34	43.0	43.1	43.2	43.3	43.4	43.5	43.6	43.7	43.8	43.9	34
35	44.0	44.1	44.2	44.3	44.4	44.5	44.6	44.7	44.8	44.9	35
36	45.0	45.1	45.2	45.3	45.4	45.5	45.6	45.7	45.8	45.9	36

Calculated by Julian A. Hall, M. Am. Soc. C. E.

For Keith's Railroad Curve Tables see end of book.

Transit - Book

Scotland-Easterly-Road

Petition No. 537

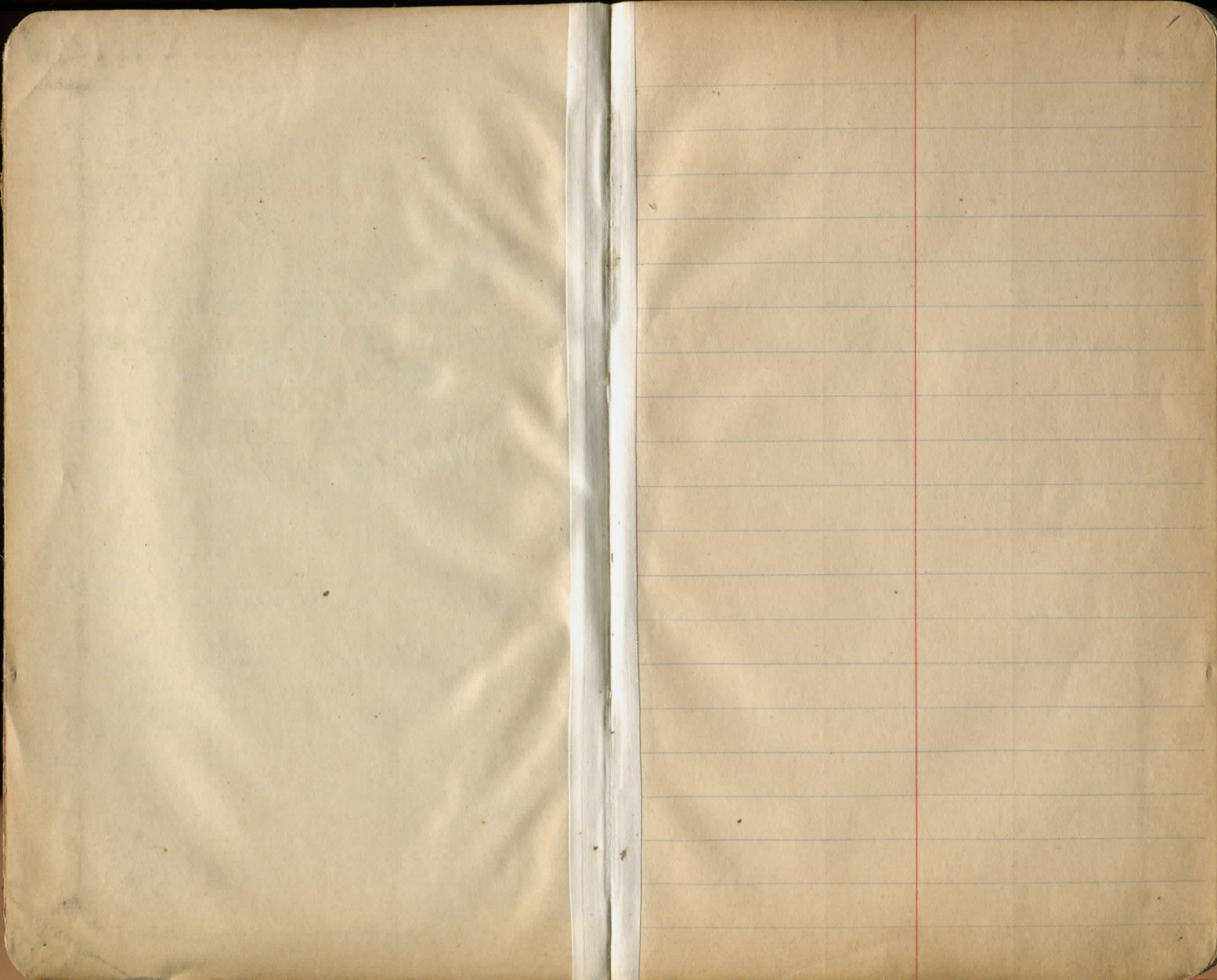
E.A. Fiedler Res. Eng.

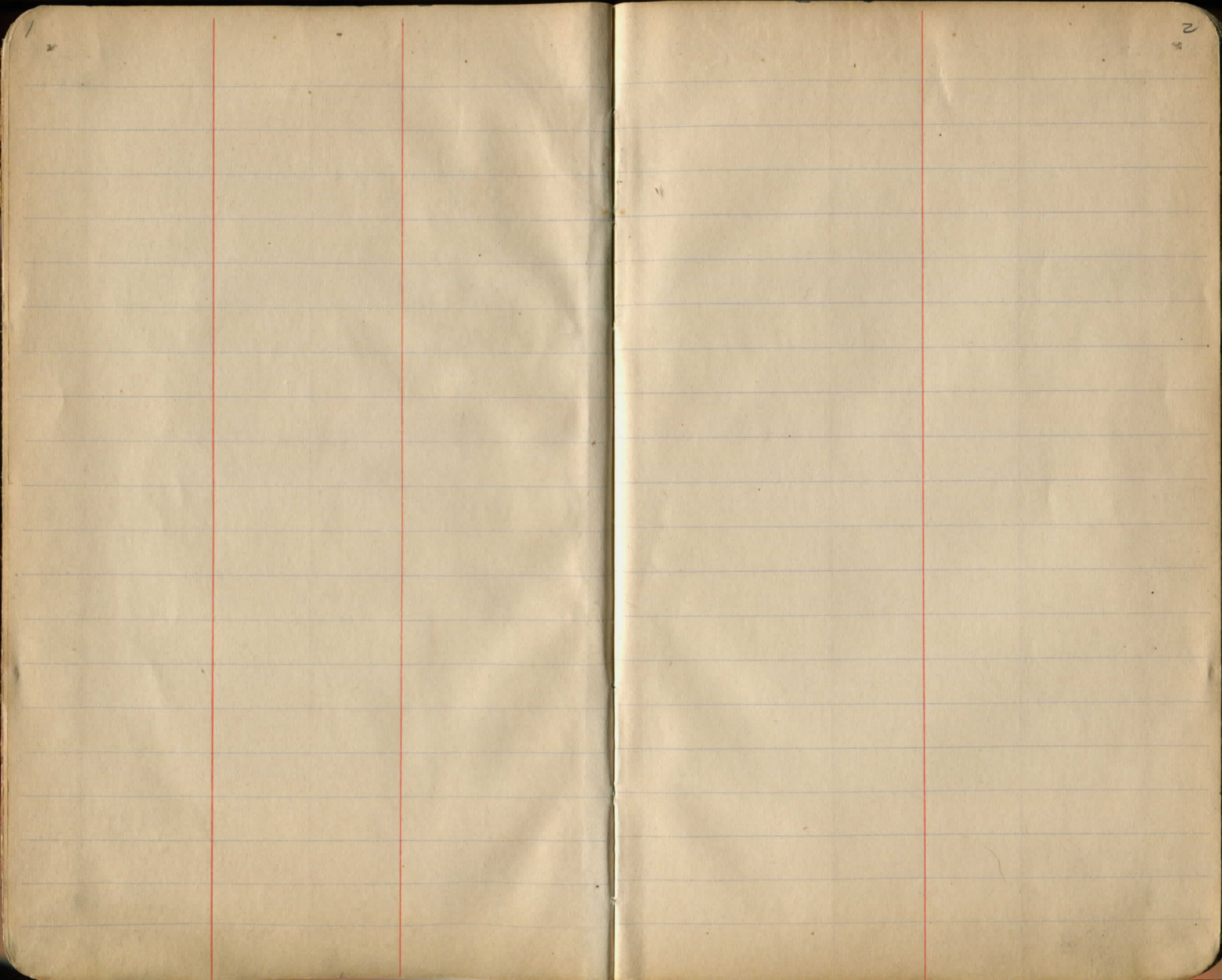
R.L. Hart Acting Res. Eng.

State Highway Dept. Ohio

Return to Surveyor's Office

Chardon Ohio







5/25/12 E.F. Fiedler  
R.L. Hart  
Y. Snyder

Fair + Warm

N

E

S

4

Sta. Angle Bearing

9

8

7

+51.4 L Stone &  $\Delta 0^{\circ} 4' L. F.C.$  S.  $82^{\circ} 25' E.$

6

5

4

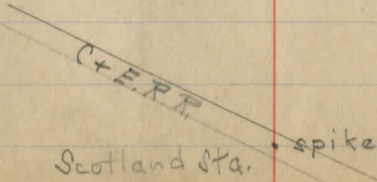
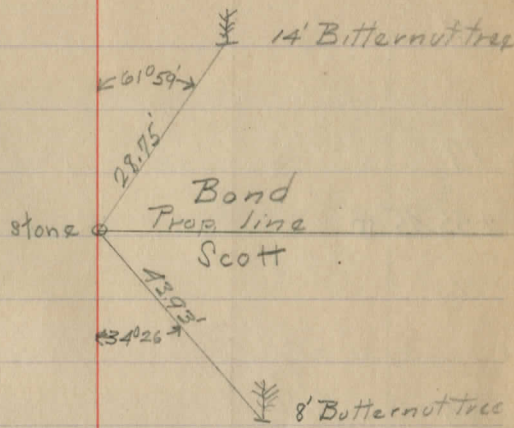
3 30' out

2 30' side stake

1

+3955

O. spike in  $\Delta$  CERR S  $85^{\circ} 20' E.$



Fair

5/27/12

E.A. Fiedler  
R.L. Hart  
Spencer Williamson

Sta. Angle Bearing

19

18

17

+55.45

S 85° 25' E

16

15

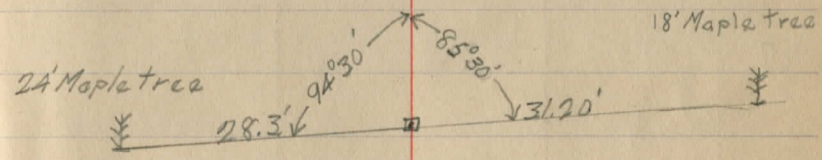
14

13

12

11

10



Fair - Windy - Rain

N.  $\frac{171.9}{28.1}$

E

U

5/28/12  
R. Hart  
R. Kenny  
S. Williamson  
G. Dudley

Sta. Culvert  
+27  
29

Angle Bearing

28

27

26

+71.9 Summit

25

24

23

22

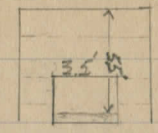
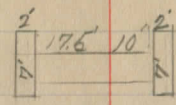
+83

21

20

S 85° 25' E

Stone culvert 29+27



Central  
Confence post.

← 30.7

37.7  
→ +71.9

→ Sidestake 26

(See last page)

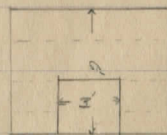
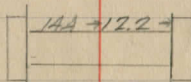
Sta.	Angle	Bearing
39		S 85° 25' E
38		
37		
36		
35	no hub	
+96	culvert	
34		S 85° 25' E
33	□ tack:	S 85° 25' E
32		
310		
30		

N

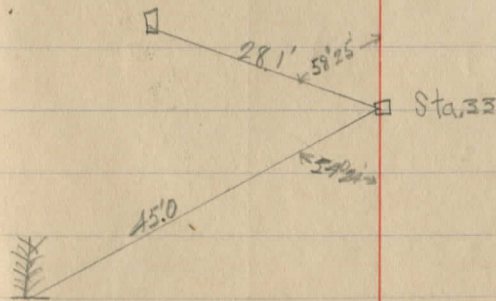
E

S

Guard stake set

Stone Culvert  
at 34+96

N.E. corner of East stone hitching post

24' Apple tree  
tack in South side

Sta                      Angle                      Bearing

49

48

47

46

45

44

43

42

41

+97.8 hub(tack)  $\Delta 0^{\circ} 23' R, FS$   $\searrow 84^{\circ} 00' E,$

40

N

E

S

Spike in South side of  
18" Wildcherry



8 6/6/12 R. Hart  
 Y. Snyder  
 M. Proque  
 J. Williamson

Sta Angle Bearing

59 1

58 0

57 1

56 2

55 3

54 4

53

52

51

412.6

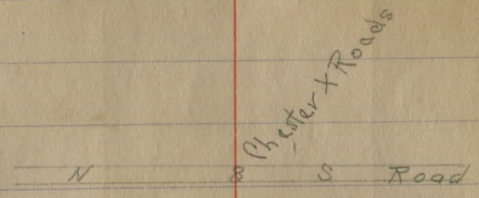
50

N 85° 00' E

N

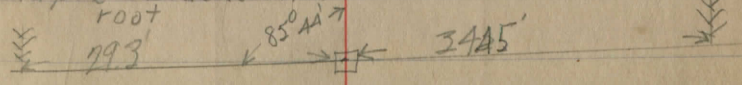
E

0



18" Maple 2 Tacks N.W. root

14" maple 2 tacks



29.3  
 34.15  
 = 2375  
 31075

9  
Sta Angle Bearing

69 11

68 10

67 9

66 8

65 7

64 6

63 5

62 4

+59 3 tackad hub  
guard stake  
61 4 30' from 4

60 2

N 85° 05' E

North

E

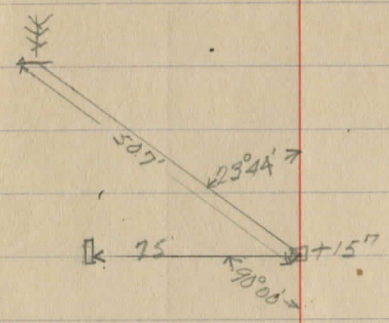
South

□ 23' → \* Mark on bott-  
om 1st step of  
Church

Sta	Angle	Bearing
79 21		
78 20		
77 19		
+15" tacked stake		$\text{N } 85^{\circ} 05' \text{ E}$
76 18		
+15"		
75 17		
74 16		
73 15		
72 14		
71 13		
70 12		

North E South

B.M. on 24' Maple tree



Sta

Angle

Bearing

±

89 31

side stake 20' from ±

88 30

87 29

86 28

85 29

84 26

83 25

82 24

81 23

80 22

12/ 6/8/12

S. Williamson  
R. Hanna  
M. Sprague  
R. Hort Hot-Fair

Sta Angle Bearing

+06<sup>-</sup> P.T. 1° 36' 10" 54'  
40  
98

PI+61E  
T.D.=60±  
Length=120'  
Ext.=1'  
D=3° 10'  
Δ=3° 48'  
0' 11' 0' 13'

+86 P.C.  
38  
96 in center of culvert

+11<sup>-</sup> P.T. 2° 15'  
38  
95 20 11'

36  
94 Δ=4° 31'  
Π=1028'  
E=3'

35  
93 L=304  
T.D.=152± 0° 43' RT

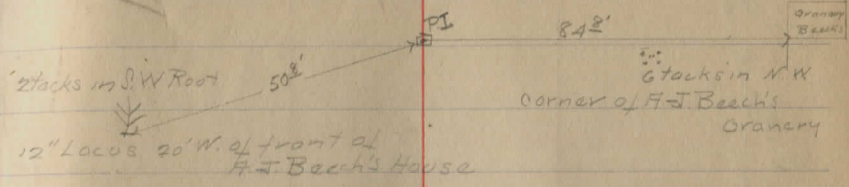
+03<sup>±</sup> P.C.  
92 3A

91 3B

90 3C

+93<sup>±</sup> 2° 16' R.F.S. S83° 00' E

Lt Lt Rt



Nostoke

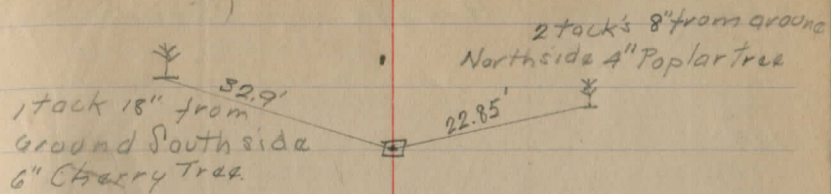
To P.I. of 2<sup>nd</sup> Curve

Sta	Angle	Bearing
108 50		
1213	changed 1° 02' LT FS	S 80° 30' E
107 49		
106 18		
105 17		
104 16	side stakes 20' from d	
103 15		
102 14		
101 13		S 80° 15' E
100 12		
99 11		

Lt,

±

Rt.



Sta	Angle	Bearing
-----	-------	---------

60 117		
-----------	--	--

58 116 tacked		S 80° 25' East
------------------	--	----------------

57 115		
-----------	--	--

56 114		
-----------	--	--

55 113		
-----------	--	--

54 112		
-----------	--	--

53 111		
-----------	--	--

52 110	side stakes 20' from 4	S 80° 25' E
51 109		

Sta	Angle	Bearing
-----	-------	---------

127

68  
126 End of State Aid

+77<sup>95</sup> → (Take later Reference)

67  
125

66  
124 side stake  
20' from L

65  
123

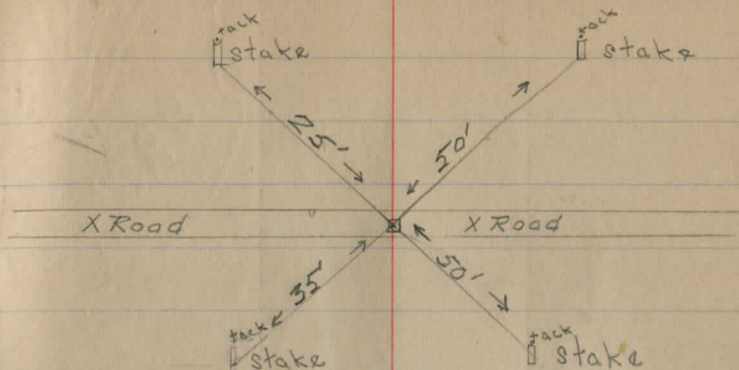
64  
122

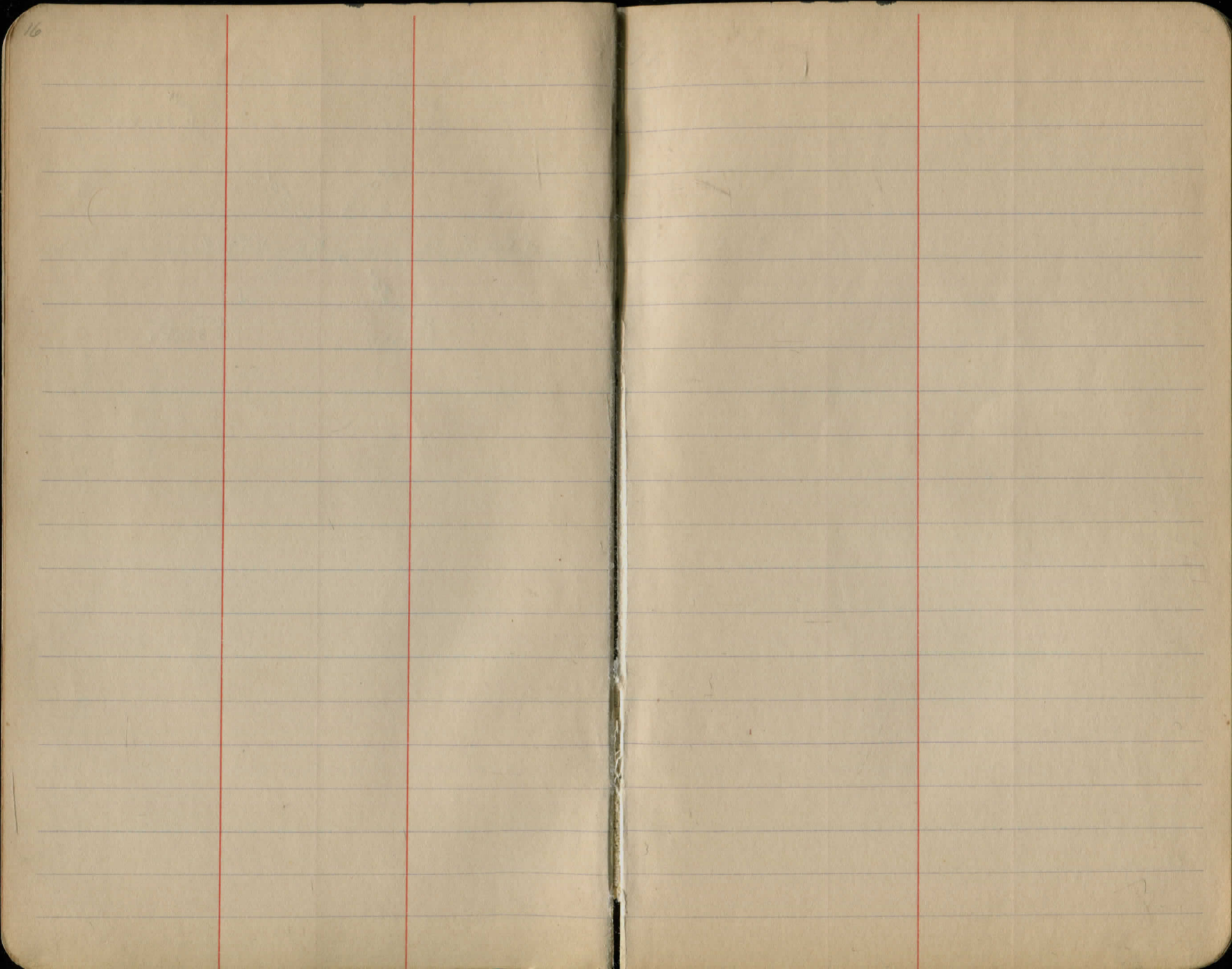
63  
121

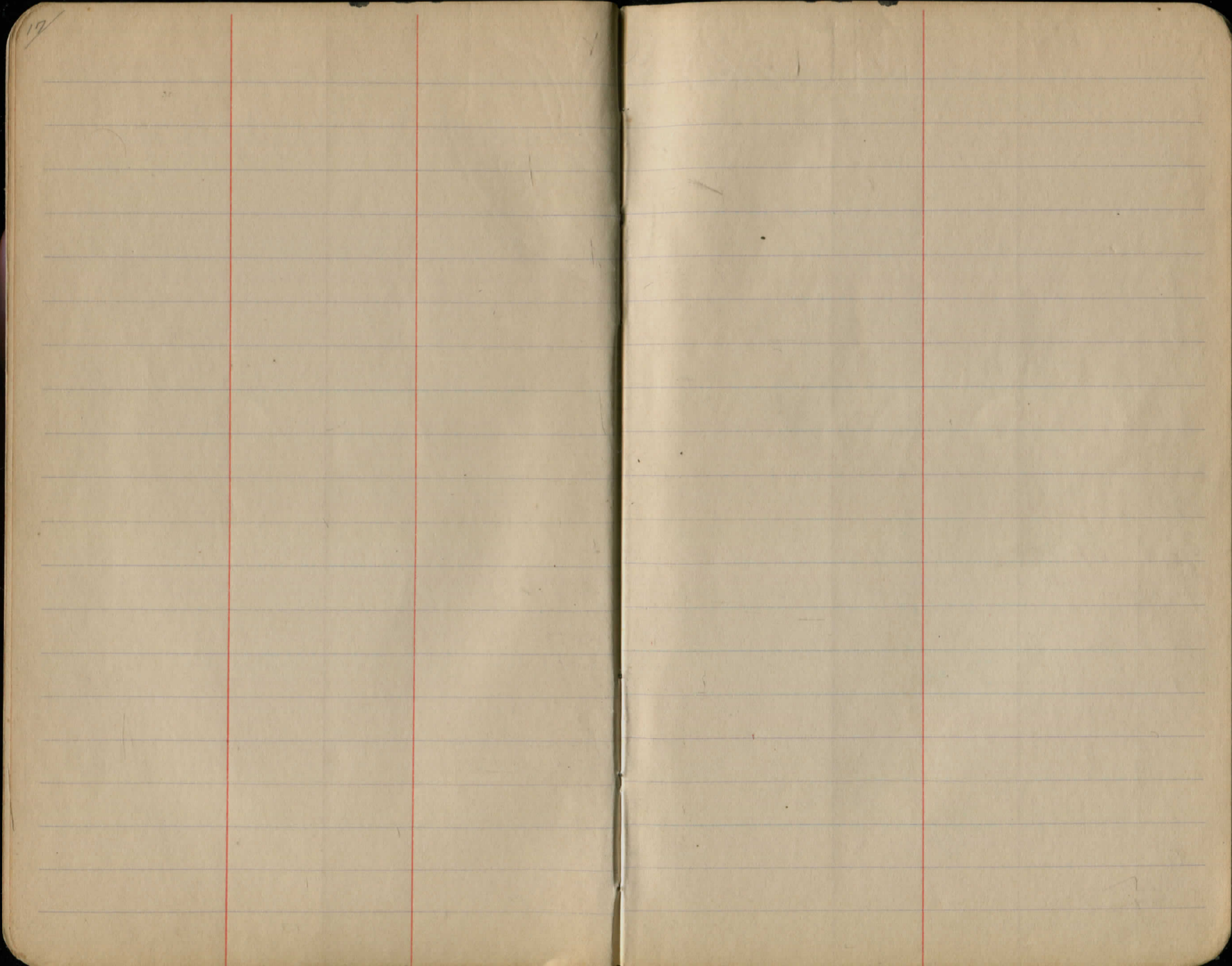
62  
120

61  
119

60  
118







18 6/22/12 S. Williamson  
Y. Snyder Fair - Warm  
R. Hart

Sta:

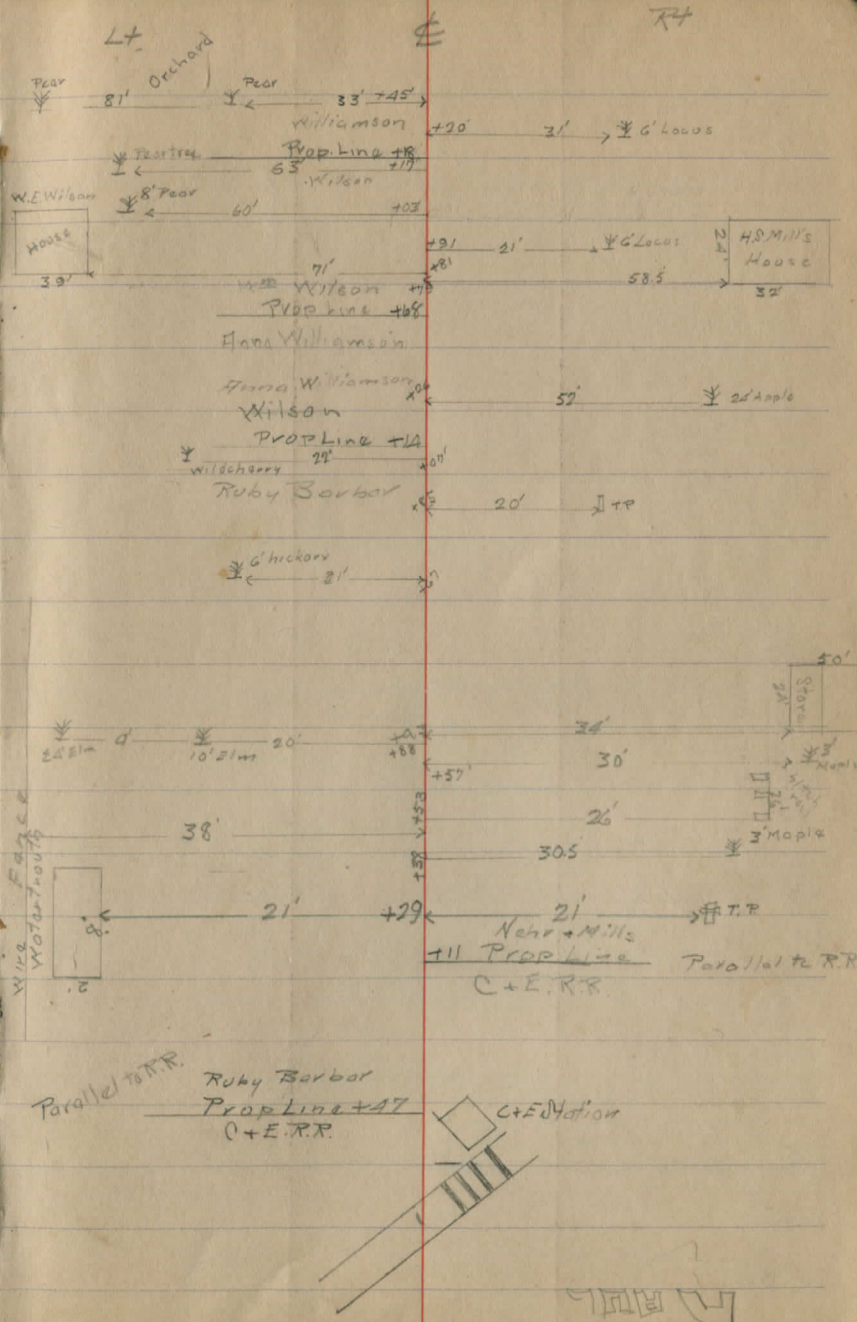
A

3

2

1

0



R. Hart

9

8

7

6

5

+ 50

Lt.

E

10

Rt.

+20 27' ↘ 10' maple

+21 18' ↑↑ 30' ↘ maple + 20

+27 34' ↘ cherry  
+26 29' ↘

+22 30' ↘ Bottom

+26 27' ↘ wildcherry

+25 29' ↘ P. Hickory

+27 28' ↑↑ ↘ Hickory  
+26 29' ↘ Hickory+21 Prop Line  
Scott

+17 26 ↘ Walnut tree 8'

+27 ↘ Cotton wood

+26 28' ↘ Pear

+25 28' ↘ Pear

+10 Prop or Line  
Nehse - Mill  
+20 29' ↘ cottonwood

+22 17' ↑↑

+25 31' ↘ Cottonwood

Orchard  
Hedge

↘ cherry trees

+27 34'

↘ cherry

+27 34'

cherry

37

+23

Williamson  
2000' 60'  
45'

120'

+17

+16 26

Pear

50'

+23

Pear

38'

+26

+26 28'

Pear

50'

+22

Pear

31'

+26

+25 28'

↘ Pear

24'

+24

+20 29'

↘

42'

+22

+22 17'

Sta

14

13

12

11

10

Bond's  
Prop Line +91  
Flanner's

+125 15' → +117  
+140 Prop Line  
Bond

Flanner's  
+88  
+89

131' +123

tree < J. Flanner +89  
3' +88  
Williamson

Brush Hedge

+14 16' → +117

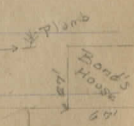
Brush Hedge ← 27' →

+14 27' → 2 trees

+164 95' → 2 trees

+291 90' →

+47 26' → 2 trees





+36 15' →

~~21~~

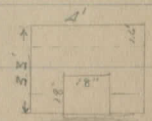
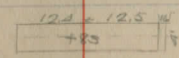
10' Iron Pipe

18" Apple ← 30' +62

wild cherry ← 35' +30 +21 15' # T.P.

cherry ← 28' +90

Tanney Prop L +50  
27' +49  
C.H. Bingham



+21 15' # T.P.

Sta

24

23

22

21

20

14" maple ← 30' +53

Sta

29

28

27

26

25

L+

±

R+

24

Culvert Poles

33'

+80 15 #77

Wire fence

Wire fence

8" Ash

30' +75

32'

+31 21'

8" Elm

28' +80

+68 16 #79

Wire Fence

Locus

27' +90

Locus

28' +77

Worm Poles 31' +72

Tanny

Tanny's House

18' +57

5'

28' +97

apple \*

20' +88

apple \*

19' +58



Lt.

E

Rt.

39

39

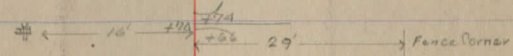
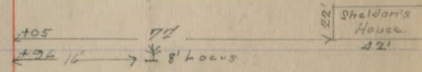
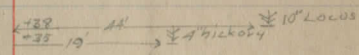
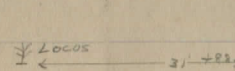
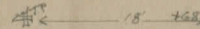
38

37

36

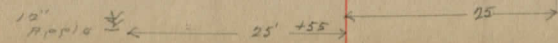
35

No objects



Culvert See Page 6

Wire fence



R+

E

L+

Sta

44

43

42

41

40

18' +37

stone post 29' Cemetery 27' +11  
+35 50' → 18" Hickory

→ 45 50' → 18" Hickory

18' +16

300 +80

12" wild cherry +24

Elms 50' +26 +77 70 Boulder

17' +26







Sto

647

636

625

614

603

Lt.

Rt

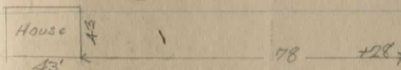
31

6" Apple  $\leftarrow$  30'  $\rightarrow$  +50

1" Cherry  $\leftarrow$  31'  $\rightarrow$  +81  
24'  $\rightarrow$  +102

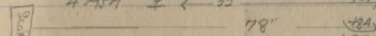
2" tree  $\leftarrow$  32'  $\rightarrow$  +50

1" tree  $\leftarrow$  33'  $\rightarrow$  +36



Prop Line +109

4" Ash  $\leftarrow$  35'  $\rightarrow$  +102



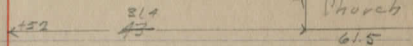
Post  $\leftarrow$  38'  $\rightarrow$  +79

8" maple  $\leftarrow$  55'  $\rightarrow$  +63

2" Maple  $\leftarrow$  39'  $\rightarrow$  +11

Prop Line +12  
24" Cherry  $\rightarrow$  +59

4" Maple  $\leftarrow$  40'  $\rightarrow$  +25

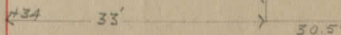


Disciple Church

Prop Line +26

Cottrell +60

8" Maple  $\leftarrow$  39'  $\rightarrow$  +77



H. Cottrell's House

7" maple  $\leftarrow$  39'  $\rightarrow$  +10

2" maple  $\leftarrow$  41'  $\rightarrow$  +26

+83 18'

5" maple  $\leftarrow$  40'  $\rightarrow$  +71



679

6912

6811

6710

669

656

Lt.

£

Rt.

2" Maple Prop  $\nabla$  Line 28' +19  
 France  
 1" Butternut  $\nabla$  36.5' +16

~~+81~~

France House  $\nabla$  75' +50  
 34' 89' +29

2" Cherry  $\nabla$  36' +60  
 2" Maple  $\nabla$  34' +22

France Prop Line +70

$\nabla$  31' +40  
 $\nabla$  245' +22

5" Chestnut  $\nabla$  36' +58

~~+63~~ Prop Line  
~~+28~~ 21'  $\nabla$  12" Cherry

749

745 17

741 16

773 15

772 14

70113

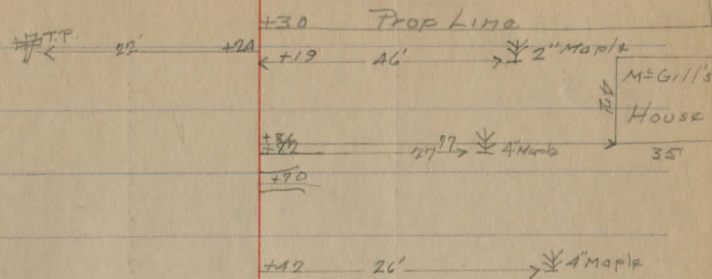
70

Lt

±

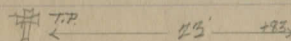
Rt.

Wait

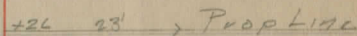


Bond

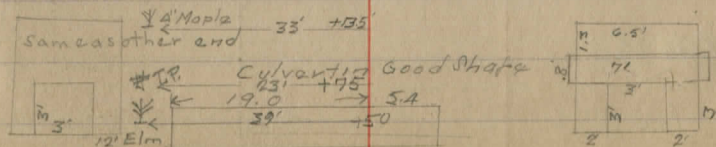
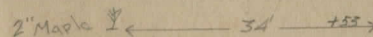
No Obstructions



M= Gill



Frank Bottles



049

798012

78921

77820

76719

75618

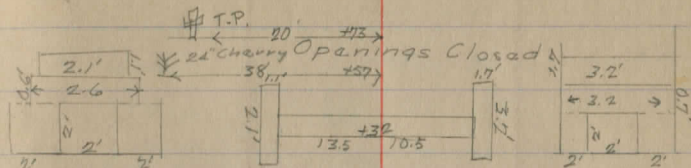
L7,

£

R7.

+29 245 → 10" Maple

+10 21' → 10" Maple



Cook  
 10" Wild Cherry → +31 +69  
 drop line 438

Bond

T.P. ← 22' +51 →

28" maple ← 38' +53 →

Sta

8527

8420

8325

8221

8123

L7

R65

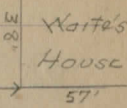
R7

+43 36 → 10" Trap

+80 60'

+77 25' → 12" Maple

+61 25' → 12" Maple



Roibock

Prop Cook +36

3" Maple ← 8' → # T.P. 18' → +20

24" Maple ← 30' → +92 +99 30'

+81 24' → 14" Maple  
→ 12" Maple

14" Cherry ← 52' → +53

20" Maple ← 29' → +44

Hook

+75 25' → 12" Maple

# T.P. 19' → +92 21' → 10" Maple

+98 24' → 12" Apple

+75 23' → 10" Maple

84

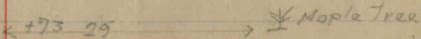
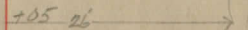
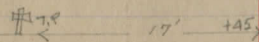
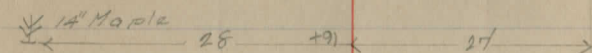
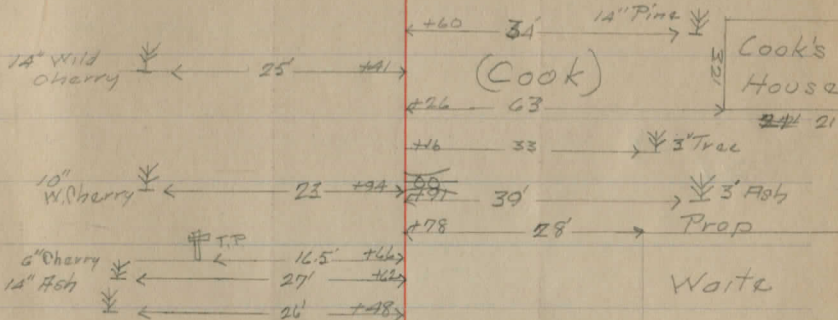
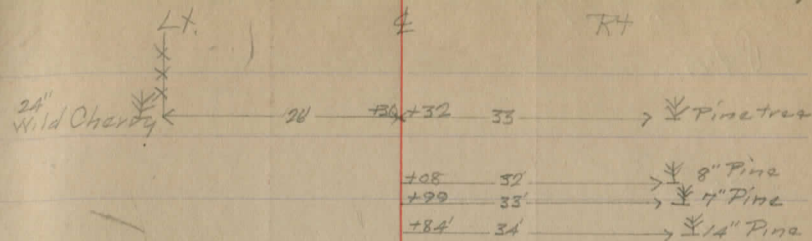
90 32

89 31

88 30

87 29

86 28



Cook's House

Waite

Wira Fance

Maple tree

7/2/12 R. Hanna  
M. Sprague  
R. Hart

Hot - Cloudy

Sta.

95 37

94 36

93 35

92 34

91 33

Lt.)

£

Rt.

37

17' +35

A. Beach

Prop Line +48  
26'

+48

+47 45'

+53

+44

11' +10

+15

+2'

Apple tree

56' Pear tree

12'

House  
78'

70'

36" Maple

No Obstructions

Rail Fence

Trajin

+46

Prop Line

Pool

+04

32'

8" Pine

24'

+87

+69

32'

8" Pine

15'

+6A

31'

" "



LT.

±

RT

5" Apple  
tree

17' ±

No Obstructions

+

22.5' ±

No Obstructions

+

24' ±

± 150.185' End of fence

← 18' →

105 A7

104 A6

103 A5

102 A4

101 A3

109

110 52

109 51

108 50

107 49

106 46

Lt

±

Rt

40

+37

Herrick  
House

59

47'

+20

11" cherry ↙

30

+61

5" cherry ↙

29

+40

#

19'

+70

+55

108

46

↘ 6" tree

Herrick  
House

8" cherry ↙

28

+63

41

↘ A tree

6" cherry ↙

29

+30

25

↘ A tree

E.S. Phillips

House

65'

30" Sycamore ↙

22'

+12

47

↘ White Birch

+69

20

↘ 2" Maple

Herrick

Prop Line

+67

Back

+63

22

↘ 6" Maple

+26

22'

↘ 15" Maple

+20

23

↘ 15" Maple

079

105 59

114 56

113 55

112 54

111 53

Apple Orchard  
about 20' from

18' +85

No. Obstruction

Apple trees 19' +83

19' +86  
8" hole

Jim Fisk  
12" Propylid +66  
Twin Maple +87

120

120

119

118

117

116 5<sup>th</sup> 6

Lt.

Rt

19' +32

Jim Fish's  
First  
Barr

30'

60'

75'

+60

+37

No Obstructions

+119

175'

+92

+52

18'

10' tree

+22

18'

Dead Tree

20" Apple

19'

40'

+30

20" Apple

19'

41'

T.P.

17'

17'

+62

+63

Kirchlay

Jim Fish

Prop Line

Phillips

Sta

Lt

E

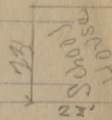
Rt

125



171 +82

+96 86'



School Chester  
Prop Line

124

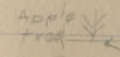
No Obstructions

123



18 +94

122



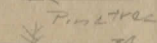
29 +99

121

Jim Ficks  
House



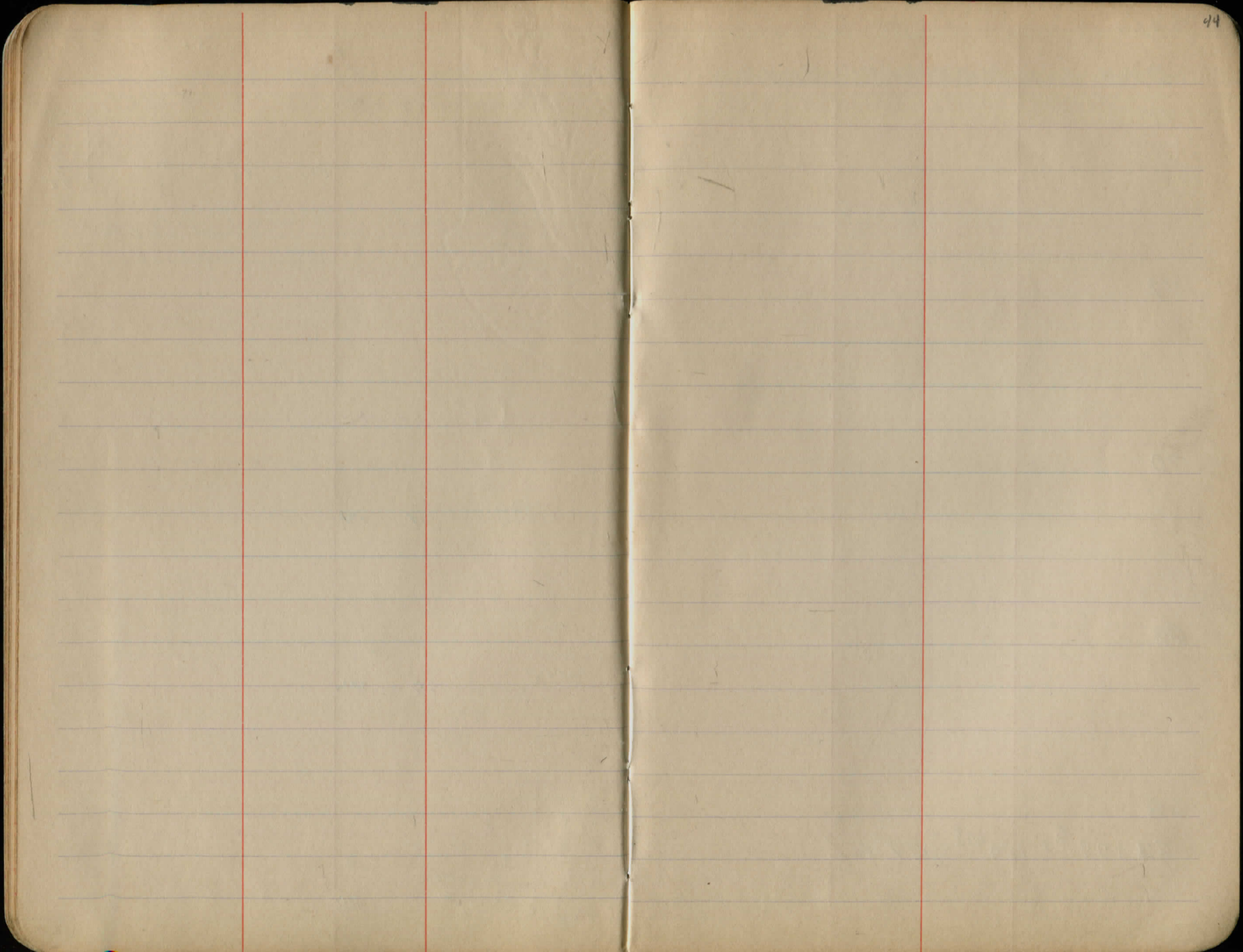
10' Pine Tree +88



Pine Tree +87

28'

19' +85



4/16/14

Sta

Bearing

Angle

72

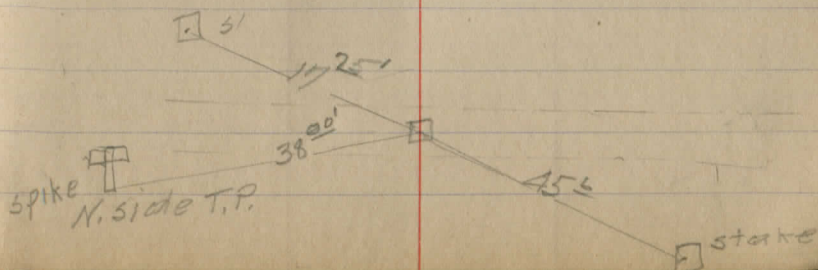
72

70

69

68

$68 + 77^{\circ} = 124^{\circ} 77^{\circ} 58' 45'' E$



Sta

Bearing Angle

77

76

75

74

73

Lt.

~~Lt.~~

Rt.

42

Sta Bearing Angle

82

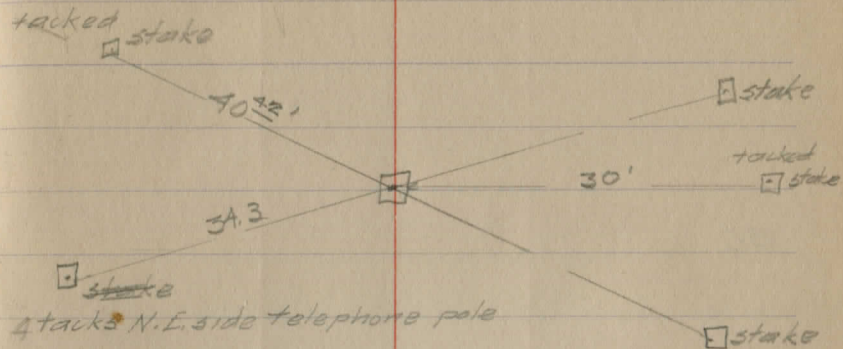
+33'  $\square$   $584^{\circ}30'E.$   $0^{\circ}36' F. S. to R. +$

81

80

79

78



Sta.

Bearing Angle.

87

86

85

84

83

Sta. Bearing Angle

92

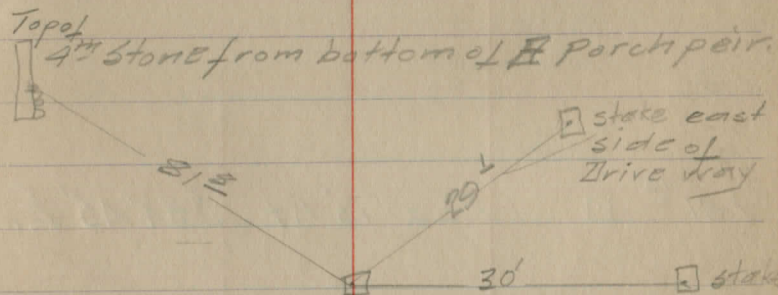
91

90

+00.3 □ 586°15'E 131°23'27"

89

88



4/20/13 Cold Windy

Smith Hart  
Snyder

Sta

Angle

Bearing

97

96

95

+41<sup>15</sup> □

F.S. Δ 1°13' RT. 584°45' E.

94

93

Lt.

±

RT.

50

tree trunks  
west side  
12" maple  
31.8

cross on NW  
corner of stand  
+ 100' to porch  
Roots

□

30'

□

W

Lt.

±

Rt.

Sta.

Angle

Bearing

Stakes at 25' from

102

101

+84° □

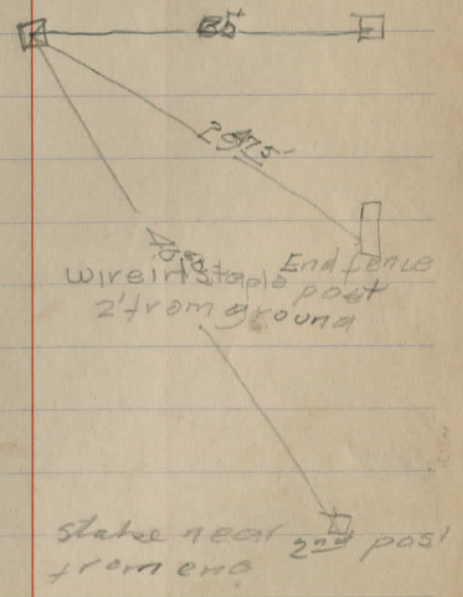
F. 30° 12' Rt

S 85° 00' E

100

99

98



Sta

Angle

Bearing

107

106

105

104

103

Sta	Angle	Bearing
+66	End	

112

111

110

109

+185 Culvert

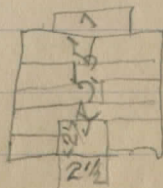
108

Tin headed tack  
S.W. side T.P.  
54.7°

Tin headed tack 59  
S.W. side Eng. temple pool  
35°

33°

← R/E 7 189



Sta Angle Bearing

117

116

115

114

113

Sta

Angle

Bearing

Lt.

~~Lt.~~

Rt.

<sup>Cold</sup>  
 A/E/1/14 Freezing <sup>Smith</sup> <sup>40ft</sup>  
 Sta B.5+ H. I. F.5 Elev.  
 S.P. 2.93 1185.16 1182.23

Lt. E Rt.  
 B.M. East side N.E. cornice board  
 to School House

68 57 1179.5

+0.1 +0.1 +0.1 +0.3 00 00 +0.2 00 00  
 25.0 17.0 9.0 7.0 00 3.0 15.0 25.0 35.0

69 63 1178.9

+1.7 +0.8 -0.8 -1.1 -0.1 00 -0.2 -0.2 -0.2 -1.1  
 30.0 20.0 13.0 9.0 7.0 00 3.0 13.0 20.0 30.0

70 63 1176.9

<sup>+3.0</sup>  
<sub>30.0</sub> +2.7 +1.7 -0.5 -0.4 0.0 00 0.0 -0.7 -0.1 -0.1 -1.2  
 24.0 15.0 13.0 9.0 6.0 00 3.0 12.0 16.0 20.0 30.0

71 87 1176.5

+2.0 +0.6 -0.3 +0.7 +0.3 00 0.0 -0.5 -1.0 -1.2 -2.1  
 30.0 15.0 13.0 10.0 7.0 00 9.0 13.0 16.0 25.0 30.0

T.P. 3.35 1184.89 362 1181.54

72 86 1176.3

+0.4 -0.2 -1.0 -0.3 00 -0.4 -1.1 -1.4  
 30.0 14.0 11.0 7.0 00 5.0 11.0 30.0

73 82 1176.7

-0.9 -0.5 -1.0 -0.1 00 -0.7 -1.0 -0.7 -0.7  
 30.0 18.0 14.0 10.0 00 4.0 6.0 8.0 30.0

B.M. 0.67 1184.22

+ N.W. cor. base of west pier of porch  
 Gray, Nichol's House

74 7.1 1177.3

+0.6 -0.2 -1.0 0.0 00 0.0 -1.0 0.0 +0.4  
 30.0 17.0 14.0 11.0 00 3.0 10.0 15.0 30.0

75 67 1175.2

-0.7 -0.5 -1.1 -0.5 00 -0.3 -0.9 -0.9 +1.0 +1.9  
 30.0 18.0 14.0 10.0 00 5.0 6.0 9.0 14.0 30.0

Sta	B.S. +	H.I.	F.S.	Elev.
76		1184.89	5.2	1179.7
T.P	12.40	1193.32	3.97	1180.92
77			11.9	1181.4
78			9.9	1183.4
79			7.4	1185.9
80			3.7	1189.6
T.P	5.00	1197.16	1.16	1192.16
81			3.7	1193.5
82			7.1	1190.1
82+78			11.6	1185.6
T.P	3.14	1190.54	9.76	1187.70
B.M			8.58	1181.96

Lt	±	Rt	11.6
-0.2	-0.3	-1.0	-0.1
30.0	13.0	12.0	9.0
00	6.0	9.0	12.0
0.0	0.6	-1.3	-0.1
00	0.0	0.0	0.0
0.0	-0.1	-0.6	-1.1
30.0	14.0	11.0	8.0
00	8.0	14.0	30.0
+0.2	0.0	-0.5	-0.1
30.0	11.0	9.0	7.0
00	3.0	11.0	13.0
00	0.0	0.0	0.0
+0.2	+0.5	+1.0	0.0
30.0	12.0	7.0	00
00	3.0	10.0	12.0
00	0.0	0.0	0.0
+0.2	+0.1	+0.2	+1.4
30.0	16.0	9.0	7.0
00	7.0	10.0	30.0
0.0	+0.3	-0.3	+0.1
30.0	11.0	9.0	7.0
00	7.0	3.0	10.0
00	0.0	0.0	0.0
-0.4	+0.5	+1.6	
30.0	11.0	9.0	7.0
00	7.0	3.0	10.0
00	0.0	0.0	0.0
+5.4	+4.5	-0.2	-0.4
30.0	12.0	12.0	16.0
00	7.0	00	6.0
00	6.0	10.0	17.0
00	0.0	0.0	0.0
+3.8	+4.5		
30.0	12.0	12.0	16.0
00	7.0	00	6.0
00	6.0	10.0	17.0
00	0.0	0.0	0.0
-1.5	-0.7	-0.7	0.0
26.0	18.0	11.0	8.0
00	7.0	10.0	14.0
00	0.0	0.0	0.0
+0.7	+4.7		
26.0	18.0	11.0	8.0
00	7.0	10.0	14.0
00	0.0	0.0	0.0
0.0	0.0	0.0	0.0
0.0	0.0	0.0	0.0

On south root 2" Hickory North of sta 32+70

Sta. B5+ H I F.S. Elev.

83 1190.54 6.0 1184.5

83<sup>+50</sup> 7.0 1183.54

84 7.3 1183.2

T.P. 0.07 1189.59 1.02 1189.52

84<sup>+40</sup> 6.1 1183.5

85 11.4 1178.2

T.P. 0.10 1181.19 8.50 1181.09

86 7.2 1174.0

86<sup>+40</sup> 7.1 1174.1

87 5.8 1175.4

T.P. 10.79 1191.37 0.11 1181.08

LT. <sup>3.3</sup> # Rt

-5.5  
25.0  
-4.5 -2.9 -1.4 -1.1 -0.1 0.0 +0.1 -0.7 -1.1 -0.6  
21.0 14.0 9.0 5.0 4.0 0.0 11.0 16.0 2.2 30.0

-0.8 -1.0 -1.1 0.0 0.0 +0.1 -0.5 -1.0  
25.0 14.0 9.0 4.0 0.0 13.0 17.0 30.0

+4.2 +4.4 +1.0 -0.2 0.0 +0.1 +1.1 +2.9 +3.9  
25.0 13.0 17.0 4.0 0.0 14.0 15.0 20.0 30.0

+3.6 +5.3 +1.3 -0.5 0.0 -0.8 -1.1 +5.4 +5.4  
25.0 14.0 5.0 1.0 0.0 9.0 15.0 25.0 30.0

8104

+2.7 +2.3 +2.4 +0.7 0.0 +0.5 +0.1 -0.1 -0.9 +1.2  
25.0 18.0 7.0 2.0 0.0 2.0 6.0 17.0 21.0 30.0

-7.9 -6.4 -4.4 -1.8 0.0 0.0 -0.4 +0.5  
30.0 25.0 22.0 5.0 0.0 15.0 22.0 30.0

+3.9 +5.7 -5.0 -0.2 0.0 -0.1 -0.9 -0.8 +2.6  
30.0 17.0 11.0 2.0 0.0 11.0 17.0 22.0 30.0

-0.8 -1.0 +0.1 0.0 0.0 +0.1 +0.3 +5.1  
30.0 22.0 16.0 5.0 0.0 11.0 14.0 30.0

Sta	B.S.	H. I	F.S.	Elev
88		1191.87	8.7	1183.2
89			4.1	1187.8
T.P.	5.33	1195.30	1.90	1189.97
B.M.			3.60	1191.70
90			10.4	1184.9
91	3.17		11.5	1183.8
T.P.	<del>11.88</del>	1186.59	11.88	1183.42
92			3.3	1183.3
93			3.4	1183.2
94			3.1	1183.5
94			3.2	1183.4
B.M.			2.825	1183.17

LT	Σ	RT
+7.2+6.6+1.2-0.8-0.1	00	0.0+6.6+7.4
30.0 21.0 11.4 7.5 6.0	00	30.0 13.0 30.0
2.9	0.000	+0.3 -0.5 +0.6 +1.6
30.0	13.0 12.0 0.0	30.0 11.0 13.0 30.0
+ On S. E. corner West Abutment to Runway to barn near Sta. 89		
+1.6	-0.1 -0.6 +0.1	00 -0.1 -0.7 -0.2 +0.4
30.0	13.0 10.0 8.0	00 30.0 10.0 13.0 30.0
-0.1	-0.8 -1.2 0.0 0.0	0.0 -1.0 -1.0
30.0	15.0 13.0 7.0	00 7.0 11.0 30.0
-0.1	-1.3 +0.2 0.0	-0.1 -0.9 -0.6
30.0	14.0 7.0	00 7.0 16.0 30.0
+1.0	+0.2 -1.0 +0.1	00 0.0 -0.7 -0.7
30.0	15.0 11.0 7.0	00 10.0 11.0 30.0
+1.4	+0.8 -0.6 -0.1	00 -0.6 -0.9 -1.2
30.0	15.0 10.0 9.0	00 10.0 7.0 30.0
+1.6	+0.2 0.0 -0.5	+0.7 +0.5
30.0	10.0 0.0	00 13.0 16.0 30.0
+ on S. W. corner Step stone to E. door Root's House		

Sta B.S H. I F.S Elev

95 1186.59 6.0 1180.6

+1.6 +1.7 +0.1 +0.6 +0.1 0.0 -0.4 +1.0 +1.6  
30.0 19.0 15.0 12.0 9.0 0.0 13.0 16.0 30.0

96 130 1173.6

+3.5 +2.9 -0.5 +0.2 0.0 -0.3 +0.7 -0.2 +2.8 +3.8  
30.0 22.0 15.0 13.0 0.0 6.0 9.0 10.0 17.0 30.0

T.P 0.49 1174.08 1300 1173.59

97 8.0 1166.1

+5.7 +2.0 +0.1 +0.1 0.0 +0.1 +0.5 -0.2 +3.8 +4.6  
30.0 25.0 19.0 12.0 0.0 4.0 10.0 12.0 12.0 30.0

T.P 0.97 1164.16 10.89 1163.19

98 1159.2

-0.6 -0.5 -1.7 -1.0 +0.1 0.0 +0.1 +0.2 +4.2 +5.5  
30.0 21.0 19.0 11.0 7.0 0.0 7.0 19.0 25.0 30.0

98 5.0

99 7.5 1156.7

-3.5 -3.3 -0.2 0.0 -0.1 -1.8 -3.1  
30.0 10.0 2.0 0.0 11.0 14.0 30.0

100 74 1156.8

6.3 +5.0 +1.3 -0.7 0.0 0.0 -0.3 -3.3 -3.8 -3.1  
30.0 16.0 10.0 4.0 2.0 0.0 11.0 19.0 24.0 30.0

101 8.8 1155.4

+6.8 +5.8 +1.6 -0.3 0.0 -0.2 +1.4 +1.1 +2.2  
25.0 15.0 9.0 4.0 0.0 12.0 14.0 21.0 25.0

T.P 0.58 1152.08 12.66 1151.50

102 2.8 1149.3

+1.6 +2.4 +0.1 -0.9 0.0 0.0 +0.2 -0.8 +5.3 +6.0  
25.0 13.0 10.0 7.0 5.0 0.0 8.0 10.0 18.0 25.0

103 9.6 1142.5

+4.8 +5.2 -0.8 0.0 0.0 -0.2 +2.0 +2.2 +8.5  
25.0 17.0 7.0 0.0 0.0 7.0 11.0 20.0 25.0

B.M 4.76 1147.32

On root of Wild Cherry tree N. of Sta. 103

12.3  
5  
Sta B.S. H.I. F.S. Elev.

1152.08

T.P. 0.97 1142.58 1029 1141.81

104 8.3 1134.3

T.P. 3.55 1134.20 11.93 1130.65

105 80 1126.2

T.P. 0.56 1126.91 7.85 1126.35

106 9.3 1117.6

T.P. 0.76 1117.93 9.74 1117.17

B.

107 82 1109.7

T.P. 2.60 1108.96 11.57 1106.36

B.M.

108 5.0 1103.9

108 +18.5

+ Culvert 5.6 1103.3

4 E

Rt

+7.3 +6.5 -0.4 0.0 0.0 -0.3 -0.8 +6.0 +7.0  
25.0 17.0 8.0 6.2 0.0 7.0 9.0 21.0 25.0

+3.0 +7.4 -0.4 -0.2 0.0 -0.1 -0.5 -0.4 3 +5.2  
25.0 20.0 13.0 10.0 0.0 10.0 11.0 14.0 21.0 25.0

-1.4 -1.3 +0.0 0.0 +0.1 -0.7 -0.4 +0.4 +0.7  
25.0 13.0 9.0 0.0 9.0 11.0 18.0 20.0 25.0

-2.3 -1.6 +0.8 0.0 +0.4 -1.6 -1.4 -0.8  
25.0 12.0 9.0 0.0 7.0 11.0 18.0 25.0

-4.7 -2.7 +0.1 0.0 0.0 -2.8 -4.0  
25.0 13.0 7.0 0.0 7.0 13.6 25.0

11.0 -8.0 6.7 0.0 -6.4 -5.7 -4.0  
100.0 50 2. 0.0 2. 50.0 100.0

Sta B.S. H.I. F.S. Elev.

109 1108.96 7.4 1101.5

110 8.4 1100.5

T.P. 0.19 1101.80 6.97 ~~1097.39~~

111 3.1 1098.7

112 4.1 1097.7

+66 4.5 1097.3

-50' 4.8 1097.0

-100' 5.5 1096.3

-150' 6.0 1095.8

To North on X Road

50 4.8 1097.0

100 4.8 1097.0

150 4.6 1097.2

To South on X Road

50 5.2 1096.6

100 4.8 1097.0

150 4.8 1097.0

4. 2. RT  
+0.3 -0.6 -0.7 +0.2 0.0 -0.1 +1.1  
25.0 16.0 12.0 10.0 9.0 25.0

-0.2 -0.6 -1.1 0.0 0.0 +0.3 -0.8 -1.0 +1.0  
25.0 16.0 14.0 11.0 9.0 12.0 16.8 25.0

+0.4 -0.4 -1.2 0.0 0.0 +0.3 -0.9 -0.2 +0.6  
25.0 15.0 13.0 8.0 8.0 13.0 15.0 15.0

-0.4 -0.5 -1.0 -0.4 0.0 0.0 +0.2 -0.2 -1.0 -0.4 +0.1  
25.0 15.0 13.0 10.0 7.0 7.0 11.0 14.0 15.0 25.0

54a

71

70

69

68

67

Lt.

£

Rt.

63

Outlet <sup>Start Hot</sup> Smith Zethin **Culvert Notes**

Sta B5 H.t F.S Elev.  
 118+15<sup>5</sup> 3.8  
 other sections with X. sections

99+30 5.0  
 about 10" Vitrified Pipe  
 Empty into Cemetery

S.P. 332 1187.09 118377

93+70 3.8  
 New Location for Culvert.

about

83+30 43

0+16 0.78 1217.66 121688

62 1211.40

12+50 0.50 1213.82 1213.37

Old Loc 5.0

11+98 New 1213.82

5.5

-Lt. 4 R.H.

-1.0 +0.1 44 88 00 -11  
 12 30 40 80 50 90  
~~4.0~~  
~~7.50~~  
 1.2-5.0 3.3-2A-0.1 00 -0.2 -F.3-3A-3L-5L  
 20.0 14.5 14.0 11.0 7.0 00 7.0 10.0 13.0 18.0 22.0

B.M. on Root's House

-1.3 -1.6 -0.2 +0.1 0.0 0.0 +0.2 -0.3 -0.2 -1.3 -1.3  
 15.0 14.5 13.5 12.0 9.0 0.0 3.0 5.0 6.0 15.0 16.0  
 +6.5 +0.8  
 20.0 25.0  
 200' to outlet  
 -1.1 -1.9 -2.2 -3.1 -3.7  
 21.0 26.0 30.0 40.0 60.0  
 -3.9 -4.5 -5.1 -5.5 -5.9  
 70.0 80.0 90.0 100.0 110.0  
 -6.9 -7.1 -8.2  
 140.0 143.0 150.0  
 3.5 -2.3 -1.7 -0.8 0.0 0.0 0.0 0.0 -0.4 -0.8 -1.0 -1.1  
 25.0 18.0 13.0 10.0 3.0 6.0 00 8.0 10.0 12.0 14.0 25.0

Falvey wrapped about 15' in vent 25'

U.S.G.S B.M.

-3.1 0.0 -0.1 +0.2 0.0 +0.1 -0.2 -0.4 -2.7  
 26.0 24.0 17.0 9.0 00 7.0 10.0 12.8 15.0  
 -4.2 = F.L. of Pipe  
 25.0 leading from  
 Culvert

B.M. Boulder

-3.9 +0.3 0.0 +0.3 -3.9 -3.9 +0.4  
 25.0 80.0 00 5.0 6.5 10.0 17.0

-1.9 -1.8 -0.6 -0.2 +0.2 0.0 -0.1 -1.2 -1.2 -1.5 -1.7 -1.9  
 24.0 22.0 18.0 16.0 11.0 00 6.0 7.0 11.0 16.0 21.0 25.0  
 -1.7 -1.2 -1.2  
 26.0 10.0 50.0  
 -3.8 -5.1  
 65.0 70.0

Cont.

Culvert Notes

Sta B5 H.I. FS Elev  
E1+32 1851 223.59 1821.74

83

Stone box Culvert

37+97 0.01 1206.56 ~~69~~ 1206.55

T.P. 286 202.51 691 1199.65

37+97 Culvert 40 →

T.P. from above H.I. 822 1194.29

~~30+61~~ 1.99 1196.28  
40 +61

56

42+40 12" vitrified 1196.24  
73

57+60 Pipe No. H.I. 46

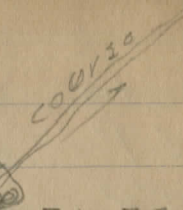
44

#. R2

65

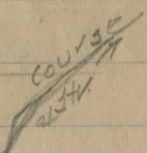
B. Montree

-31-05-01 -32 00 -07 -32 -31 -33-37  
14 125 6.0 5 80 10.5 120 180 FLO 280  
-29 -23 -17 -16 -37 -46  
170 190 210 250 50 1000



B. M. Beech's

00+04.1 -28-28-35-46  
0010.01 120 18 270 310  
-29-26 -27-33+0.3 -44 -53 -57  
250 200 150 10.0 90 40.0 560 75.0



24.8 -51-01 +01+01 00 -00-53-68-69-6.2  
250 180 150 135 80 00 50 70 130 170 250  
rise gradual drop perceptible

R.P. F.P.  
-21 0.0 +0.3 00 -03 -28 -29 -29 -31  
170 160 125 00 40 6.0 10.0 140 190  
-31-04-01  
25.0 21.0 25.0

+11.0  
250  
+01-07-11-04 0.0 00 -07-14-25-33-47  
20.0 160 150 120 70 00 50 70 11.0 140 20.0  
-58 -64 -69 -78  
266 30.0 35.0 400  
-111  
600

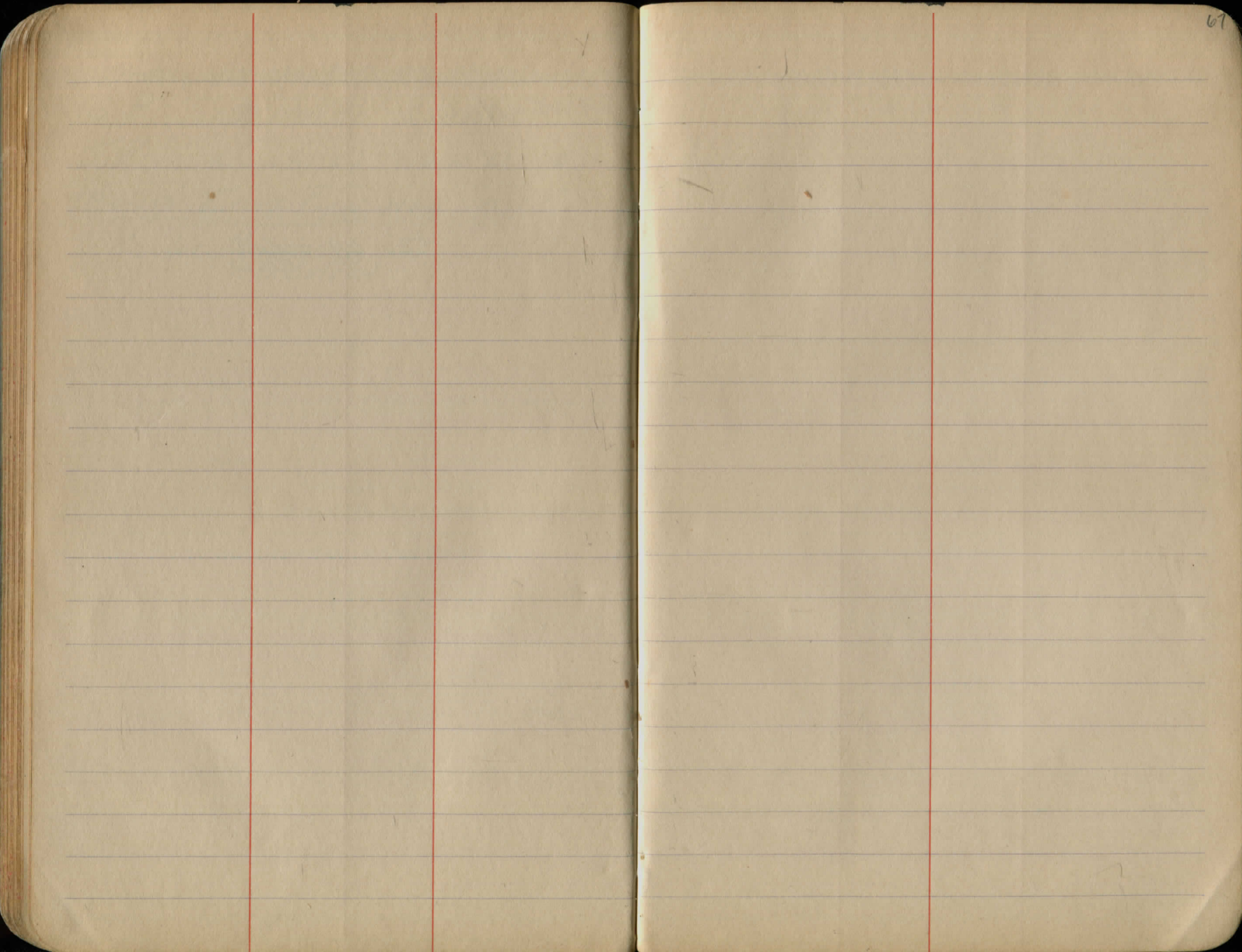
Sta	B.S.	H.I.	F.S.	Elev.
S.P.	0.59	1184.81		1184.22
T.P.	4.16	1181.21	7.76	1177.05

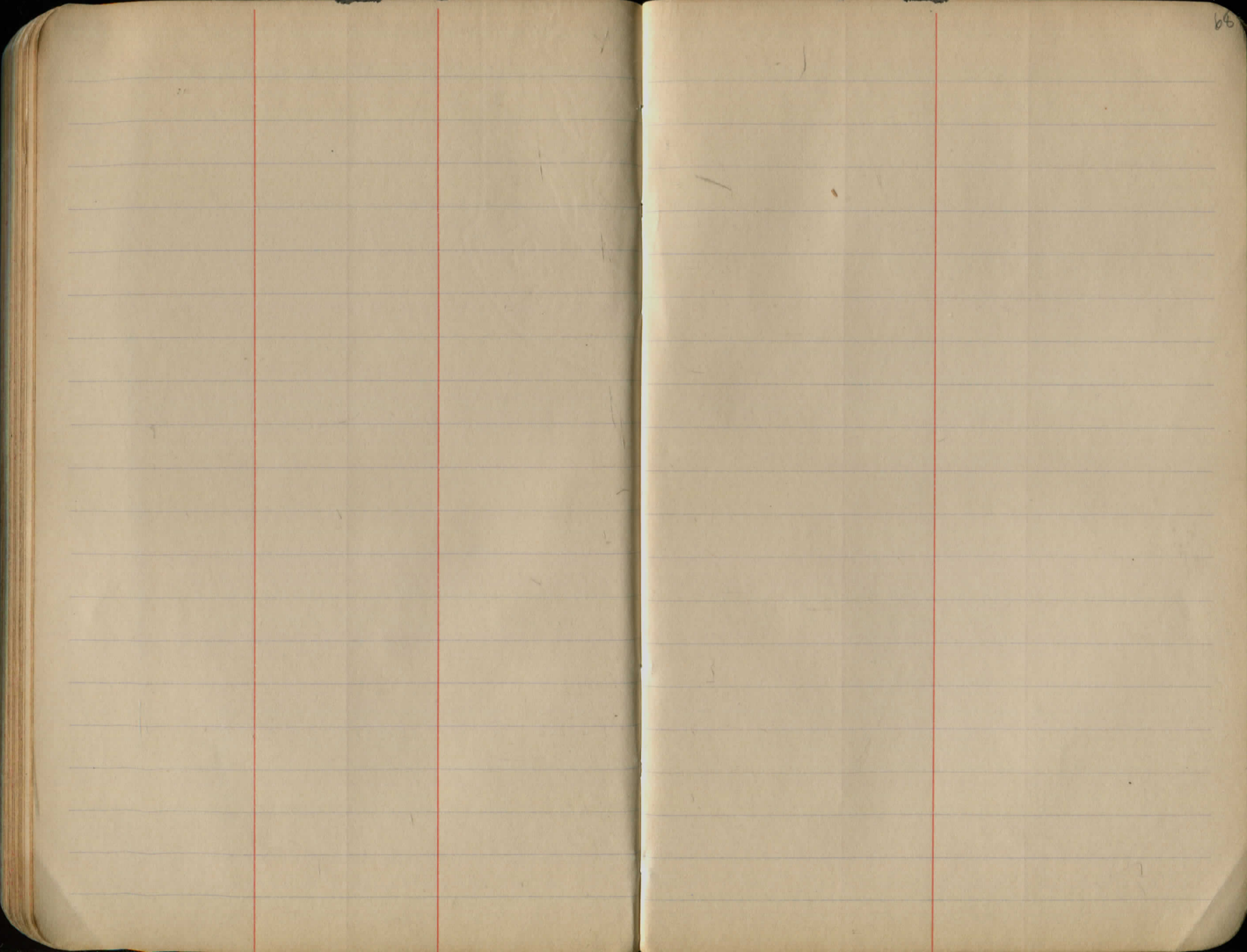
72+19 Iron Pipe now in 12"

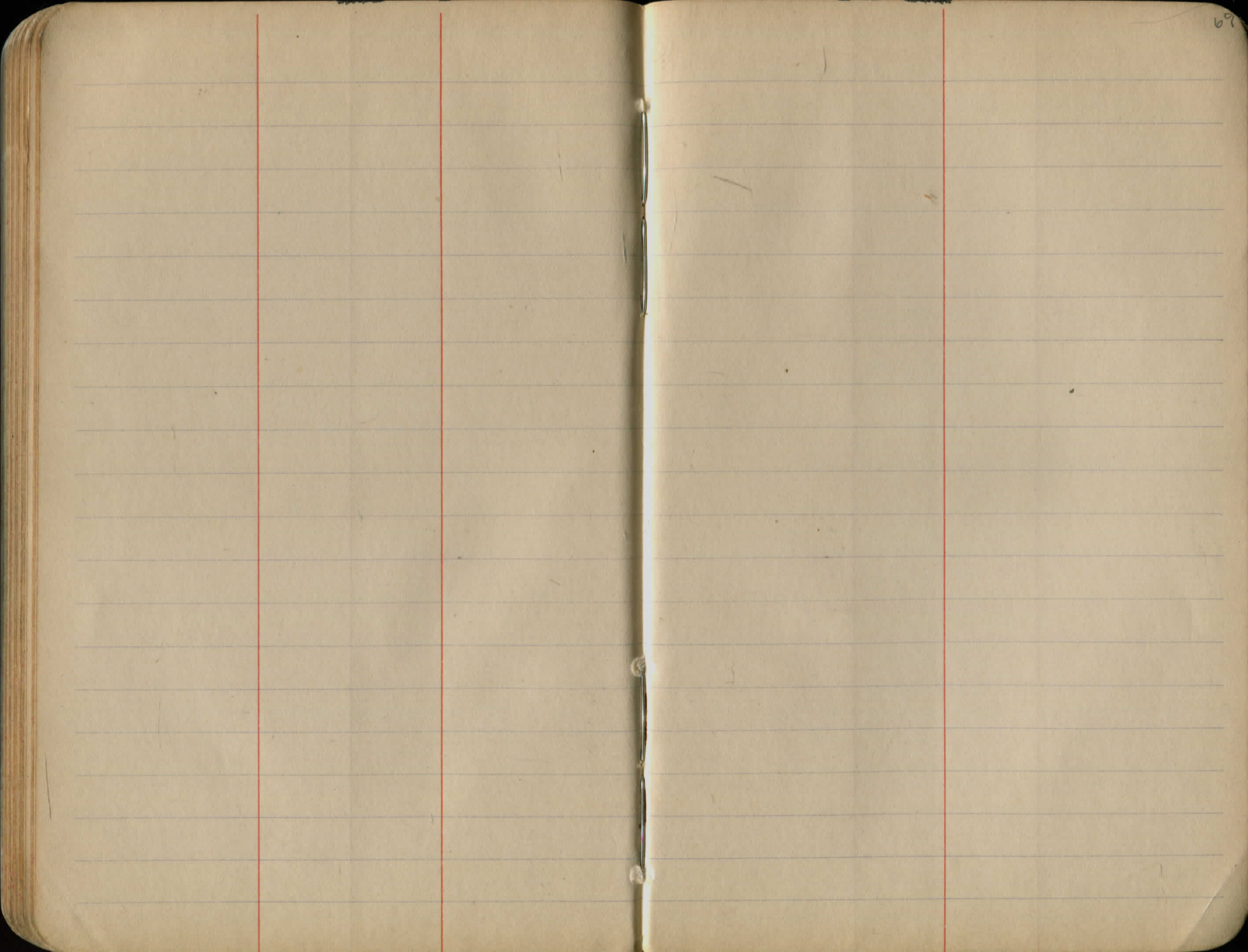
72 for Proposed 52  
box culvert

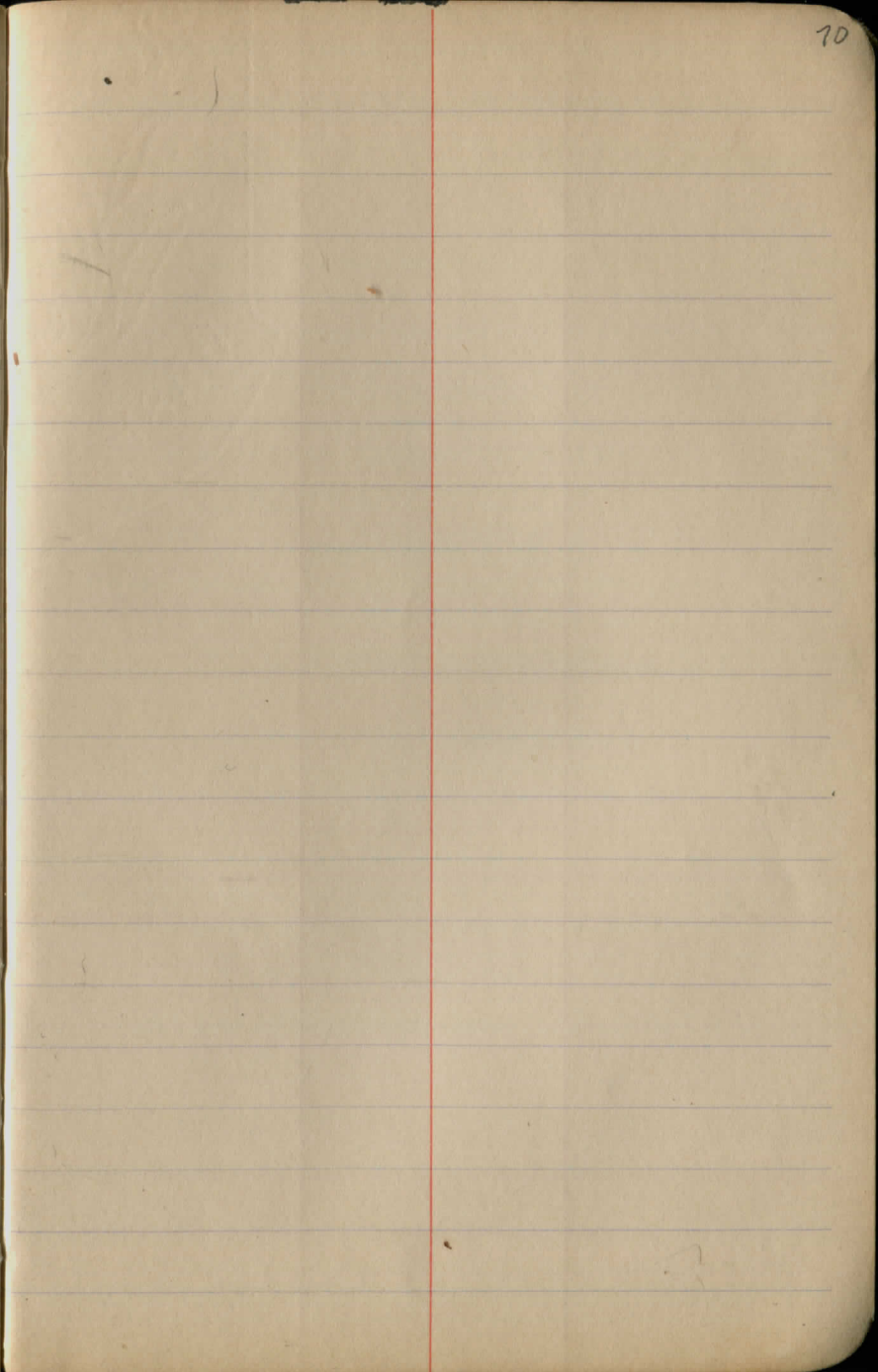
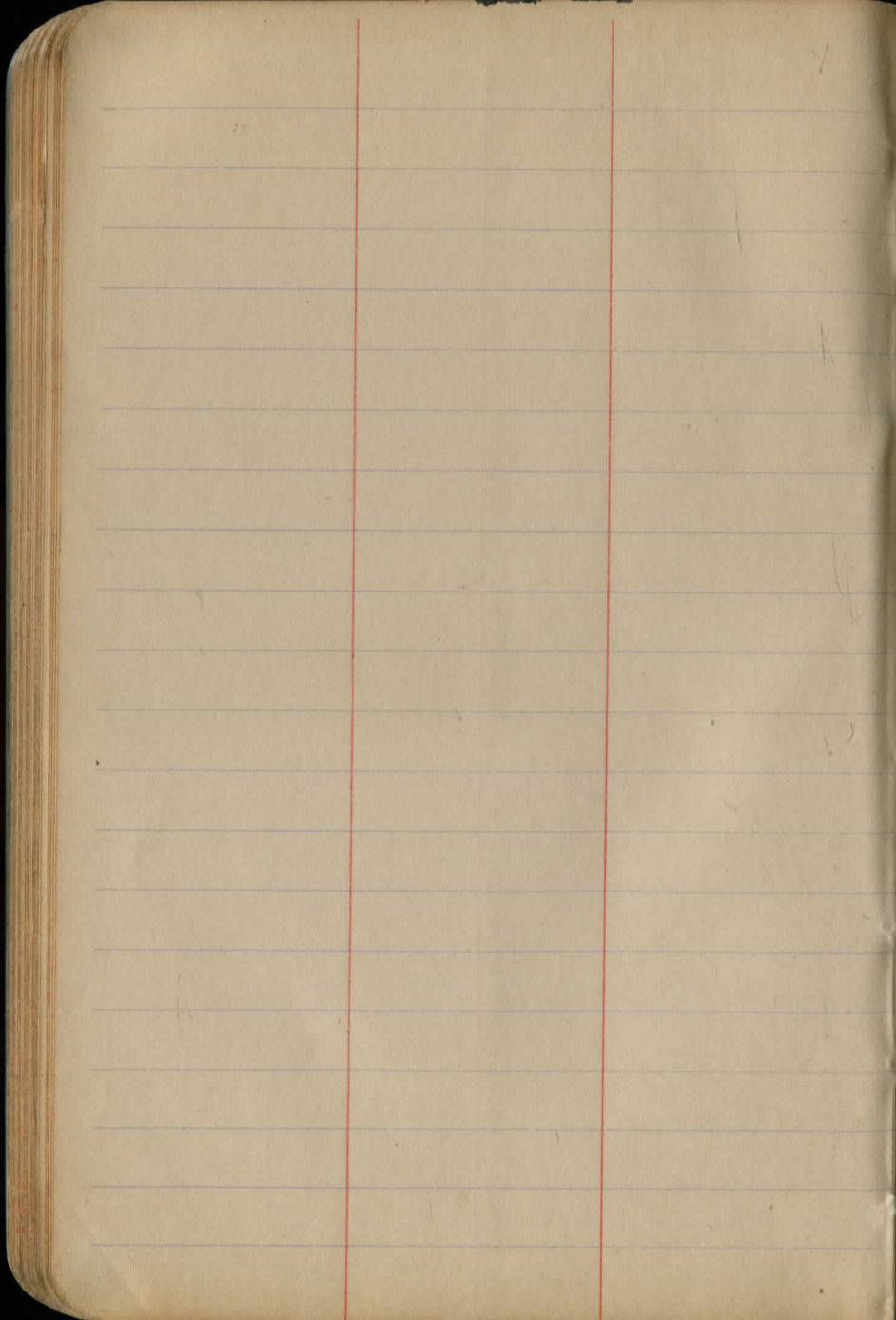
B.M. Nichols

00 = 19  
50.0

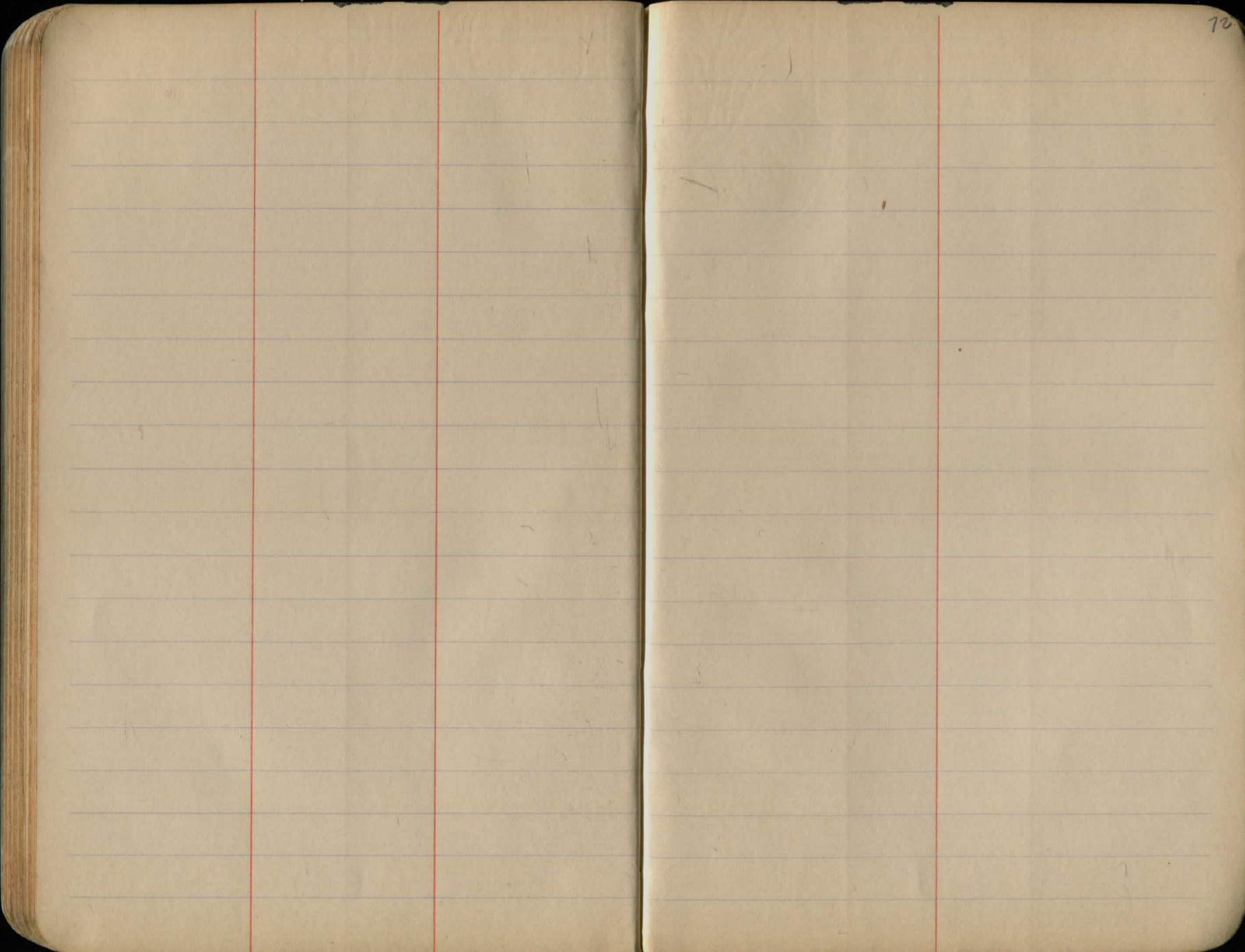


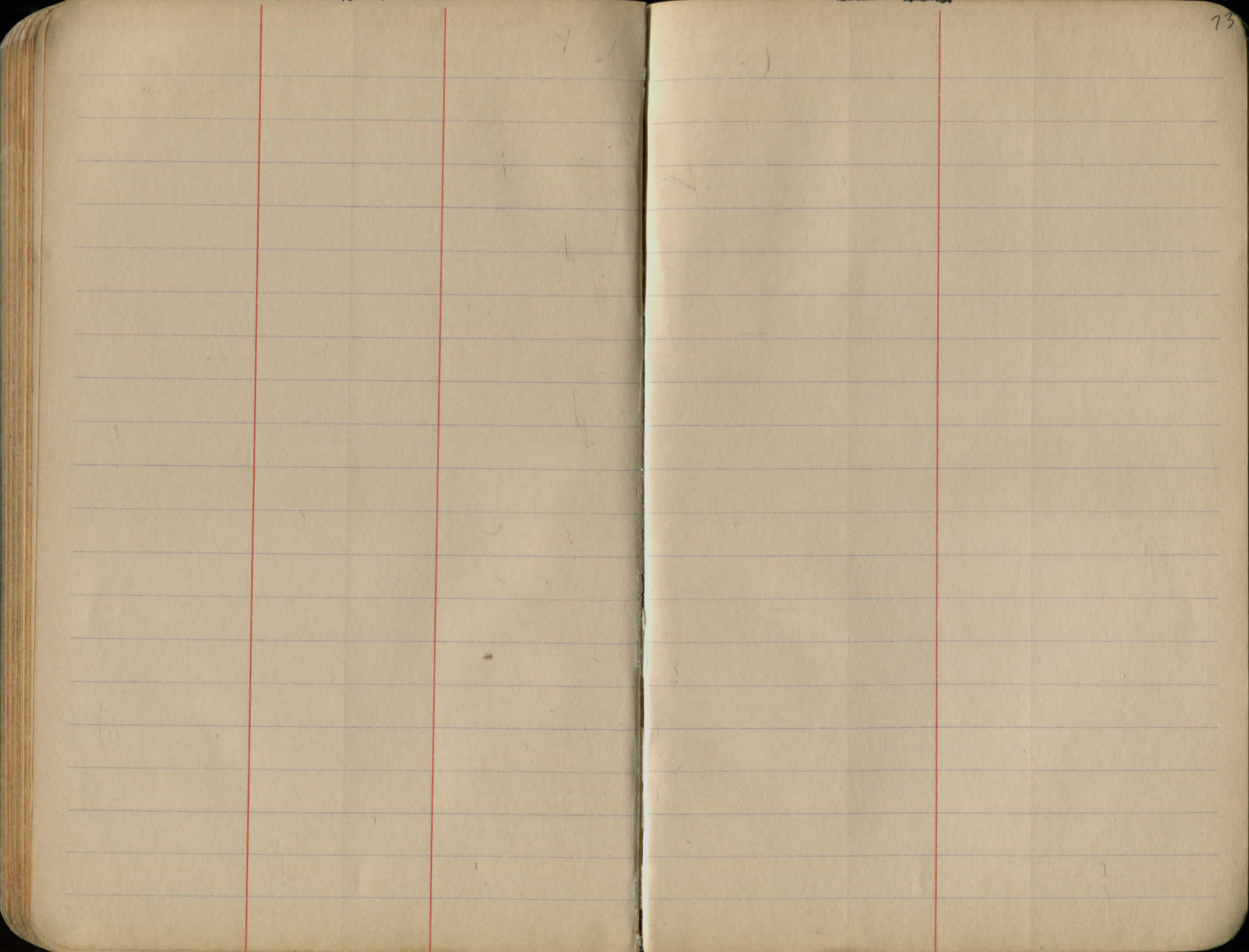






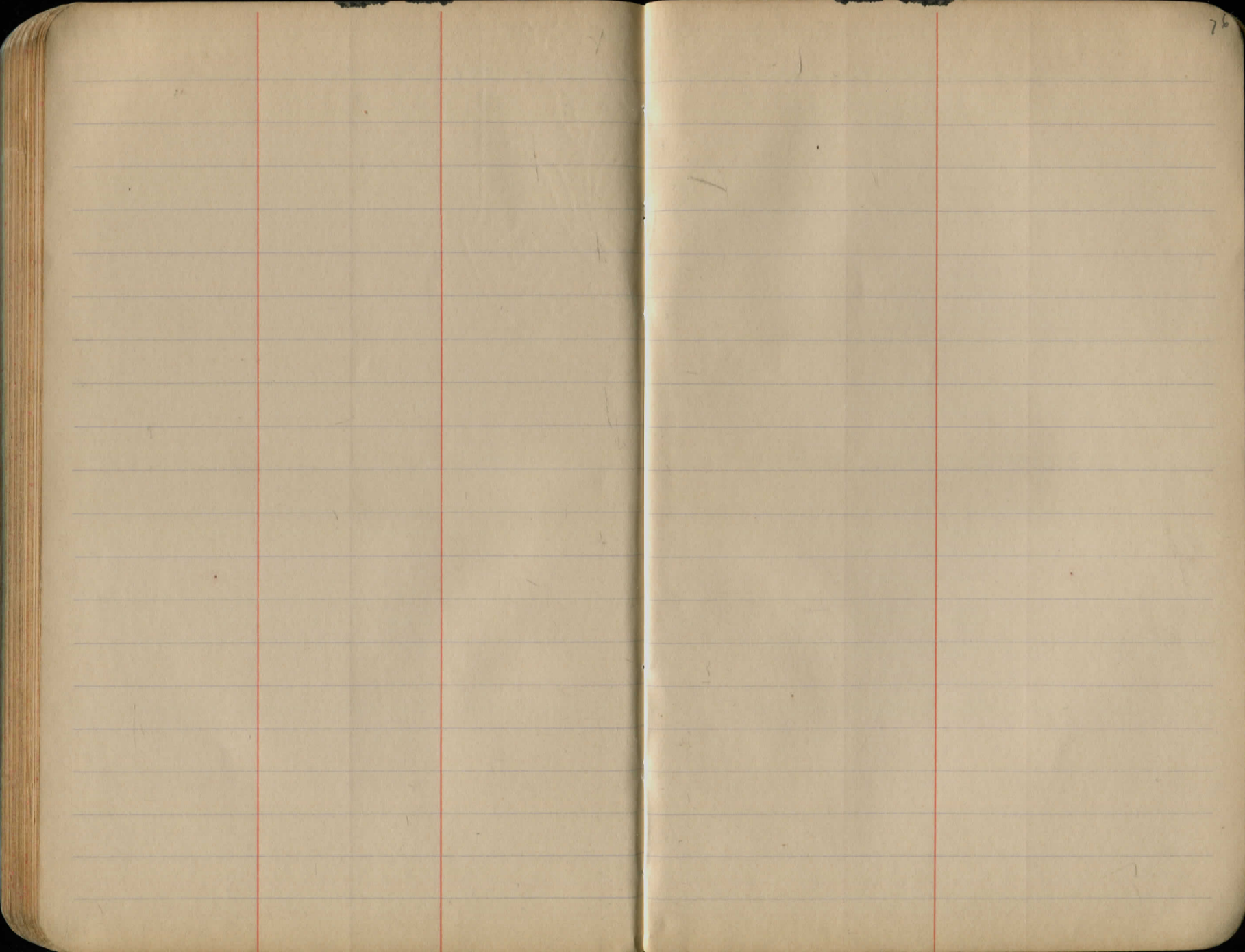






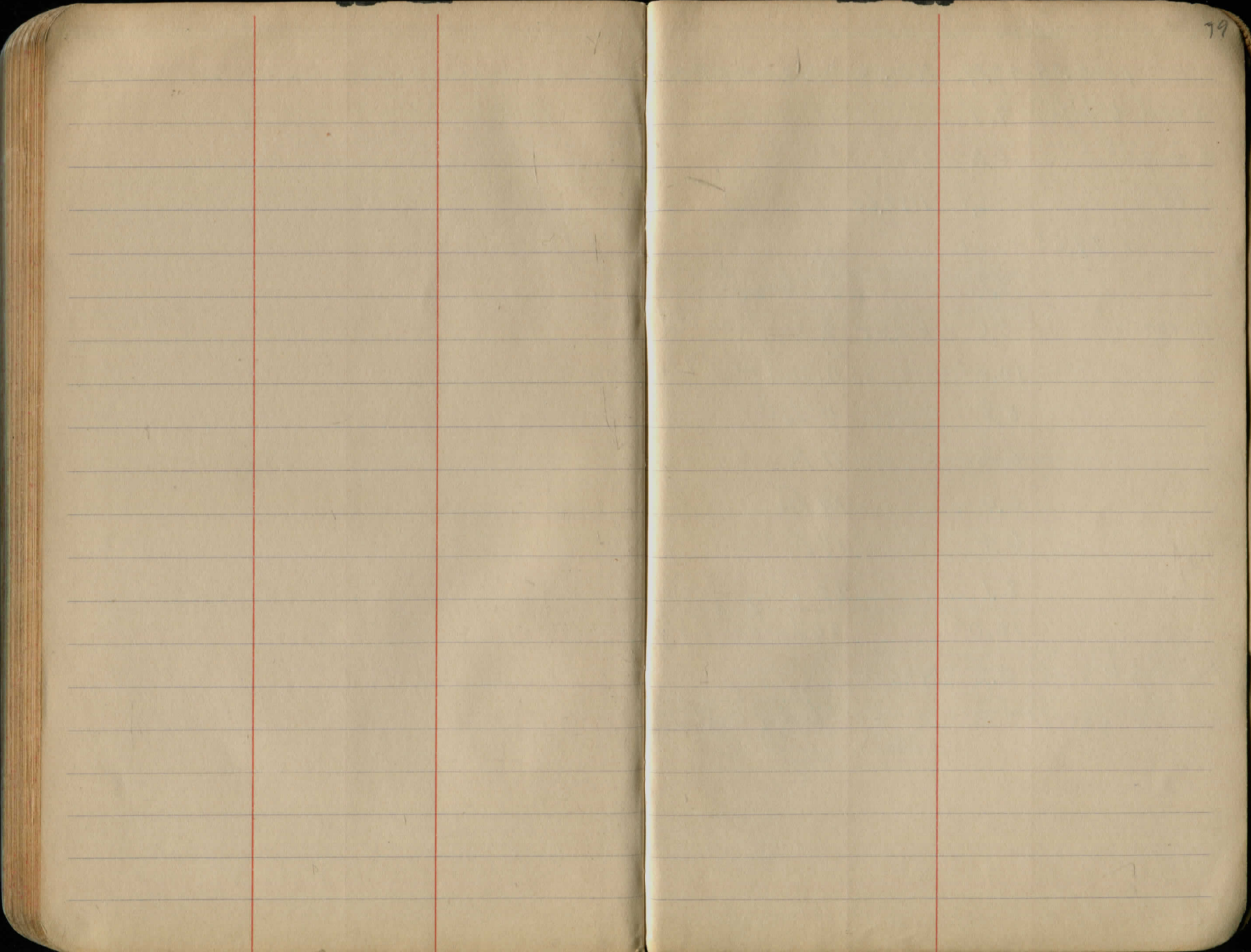












July 30 Fiddlers Creek, Wallace

1189.85 + 7.89 1181.96 B.M. s. root of Hicko  
 S end 6" pipe 8.1 at 83+30  
 Road 6.2 1183.6 " " "  
 T.P. -112.5 1178.60

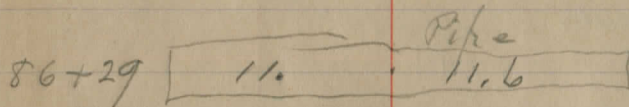
1179.65 + 1.05

8.1 R.  
 S. flow line  
 86+29 5.6 1174.05 S. surface Rd  
 10.0 N. end flow line  
 5.8 7' L  
 6.2 11 R  
 6.0 13 R  
 6.4 17 R  
 2.1 27 R  
 12.0 26 L to 8 L.  
 + same slope

86+40 5.7 1174.05

culvert 18" of road 4.9 flow line W  
 end of E. + W. at 100

L. of 82+70 L R



13.6	11.6	9.6	5.7	5.5	6.7	5.3	1.7	0.7
34	24	16.	8.5	57	9	15	19.	25
5.6	5.0	4.0	5.1	49	4.7	5.5	7.2	8.3
24	20	16	7	12	36	86	100.	
		3.0	4.0					
		30.	25.					

center of NW Edge  
of North Parapet

3 stacks west  
side of "locus"

30.2

Sta. 58

End of IMP

S.W. corner  
of South parapet

18.7

4 stacks south

30.5

4 stacks west side  
fence post

Sta 26+71

14

3

5.3

11

3.9

1.4

14

2

2.8

.8

8

8

11.3

100.0

51.4

48.6

100

41.15

58.85

F 3.3 C.

3.3

.5  
2.8

2.0

1.3

.5  
1.8

4.4

2.0

2.4

5  
2.9

5016

4767

249

+51.4 = 1<sup>st</sup> Angle 28.6

100 28 72 170.60 17 100 71.9 36.8  
63.30 58.45 28.7 65.4

25+171.9 +5.14

100 0 38 100 73.7 418 38  
27.4 26.3 314 37  
72.6

100 0 58.4 104 2104 314  
29.1 249 30 52 52  
130 366

(Acath's East Line) 4.9 2.29 2.8

21 Rods 15 1/4 44 13 16.5 21 1.6  
765

16.5 21 330 2.3  
765 France 34 68 5

330 Cook 361.15 1.8  
346.5 3.6  
361.5 11

E Scotland Station Westery 14.6

4 1st Stake No 27

N 39.3 3 Stake in N side

8 Maple

6309  
361  
6670

16.5  
24  
200  
326.5  
361  
6309  
6670

1160.34 15  
50/200/050  
250  
PLEASE RETURN TO  
GAUGA COUNTY ENGINEER

COURT HOUSE  
CHARDON, O.  
ROADWAY 14 FEET WIDE, SIDE SLOPE 1 1/2 TO 1  
FOR SINGLE TRACK EMBANKMENT  
PHONE 250-X

	0	.1	.2	.3	.4	.5	.6	.7	.8	.9	
0	7.0	7.2	7.3	7.5	7.6	7.8	7.9	8.1	8.2	8.4	0
1	8.5	8.7	8.8	9.0	9.1	9.3	9.4	9.6	9.7	9.9	1
2	10.0	10.2	10.3	10.5	10.6	10.8	10.9	11.1	11.2	11.4	2
3	11.5	11.7	11.8	12.0	12.1	12.3	12.4	12.6	12.7	12.9	3
4	13.0	13.2	13.3	13.5	13.6	13.8	13.9	14.1	14.2	14.4	4
5	14.5	14.7	14.8	15.0	15.1	15.3	15.4	15.6	15.7	15.9	5
6	16.0	16.2	16.3	16.5	16.6	16.8	16.9	17.1	17.2	17.4	6
7	17.5	17.7	17.8	18.0	18.1	18.3	18.4	18.6	18.7	18.9	7
8	19.0	19.2	19.3	19.5	19.6	19.8	19.9	20.1	20.2	20.4	8
9	20.5	20.7	20.8	21.0	21.1	21.3	21.4	21.6	21.7	21.9	9
10	22.0	22.2	22.3	22.5	22.6	22.8	22.9	23.1	23.2	23.4	10
11	23.5	23.7	23.8	24.0	24.1	24.3	24.4	24.6	24.7	24.9	11
12	25.0	25.2	25.3	25.5	25.6	25.8	25.9	26.1	26.2	26.4	12
13	26.5	26.7	26.8	27.0	27.1	27.3	27.4	27.6	27.7	27.9	13
14	28.0	28.2	28.3	28.5	28.6	28.8	28.9	29.1	29.2	29.4	14
15	29.5	29.7	29.8	30.0	30.1	30.3	30.4	30.6	30.7	30.9	15
16	31.0	31.2	31.3	31.5	31.6	31.8	31.9	32.1	32.2	32.4	16
17	32.5	32.7	32.8	33.0	33.1	33.3	33.4	33.6	33.7	33.9	17
18	34.0	34.2	34.3	34.5	34.6	34.8	34.9	35.1	35.2	35.4	18
19	35.5	35.7	35.8	36.0	36.1	36.3	36.4	36.6	36.7	36.9	19
20	37.0	37.2	37.3	37.5	37.6	37.8	37.9	38.1	38.2	38.4	20
21	38.5	38.7	38.8	39.0	39.1	39.3	39.4	39.6	39.7	39.9	21
22	40.0	40.2	40.3	40.5	40.6	40.8	40.9	41.1	41.2	41.4	22
23	41.5	41.7	41.8	42.0	42.1	42.3	42.4	42.6	42.7	42.9	23
24	43.0	43.2	43.3	43.5	43.6	43.8	43.9	44.1	44.2	44.4	24
25	44.5	44.7	44.8	45.0	45.1	45.3	45.4	45.6	45.7	45.9	25
26	46.0	46.2	46.3	46.5	46.6	46.8	46.9	47.1	47.2	47.4	26
27	47.5	47.7	47.8	48.0	48.1	48.3	48.4	48.6	48.7	48.9	27
28	49.0	49.2	49.3	49.5	49.6	49.8	49.9	50.1	50.2	50.4	28
29	50.5	50.7	50.8	51.0	51.1	51.3	51.4	51.6	51.7	51.9	29
30	52.0	52.2	52.3	52.5	52.6	52.8	52.9	53.1	53.2	53.4	30
31	53.5	53.7	53.8	54.0	54.1	54.3	54.4	54.6	54.7	54.9	31
32	55.0	55.2	55.3	55.5	55.6	55.8	55.9	56.1	56.2	56.4	32
33	56.5	56.7	56.8	57.0	57.1	57.3	57.4	57.6	57.7	57.9	33
34	58.0	58.2	58.3	58.5	58.6	58.8	58.9	59.1	59.2	59.4	34
35	59.5	59.7	59.8	60.0	60.1	60.3	60.4	60.6	60.7	60.9	35
36	61.0	61.2	61.3	61.5	61.6	61.8	61.9	62.1	62.2	62.4	36

Calculated by Julien A. Hall, M. Am. Soc. C. E.

MADE IN GERMANY.

